

BIODEGRADABLE



Products in harmony with

Nature





# From nature to you ...

Duni is continuously striving to find products and solutions that are better for the environment and limiting the use of non renewable resources. As a result of this, Duni is now launching a full range of biodegradable products.

The biodegradable range is excellent for serving drinks and meals as well as take away of cold food.

Duni's biodegradable range is made from natural and renewable raw materials.

The material also has a lower impact on the environment in terms of fossil resource use and greenhouse gas emissions.

And that is good news. Both today and tomorrow.

# ... and back to nature

*The Nature Works<sup>®</sup>  
polymer is made from  
renewable, natural raw  
materials. It is fully  
biodegradable.*



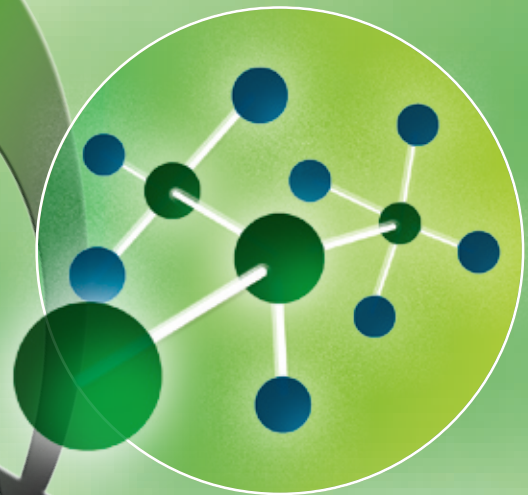
### **3** Disposal

Products made from the Nature-Works<sup>®</sup> polymer break down in industrial composting facilities. The resulting compost can be used to grow more corn.



**1 Fermentation**

Corn is broken down into corn sugar and dextrose. This is fermented and distilled into lactic acid.



**2 Production**

The lactic acid is transformed into NatureWorks® polymer. This can be turned into various products.



**Reduced CO<sub>2</sub> emissions**

The NatureWorks® polymer is the world's first polymer that is greenhouse gas neutral.

**Reduced fossil fuel use**

Made from annually renewable resources, the NatureWorks® polymer uses up to 68 percent less fossil fuel energy than traditional plastics. Emissions are further reduced by the use of wind power in the production.

# Products made from the NatureWorks® polymer

Duni's Biodegradable product range is made from the Nature Works® polymer, the first plastic-like material to have a significantly reduced carbon footprint. The polymer is made from corn starch, a 100 percent annually renewable resource. On disposal, products made from the polymer break down into compost. This can be used to grow new corn.

The Nature Works® polymer has features similar to traditional plastics and is suitable for a wide variety of applications. Products can be clear, opaque, flexible or rigid. They resist grease and oil and provide an outstanding barrier to flavours and odours.

## NatureWorks® product features:

- Lower greenhouse gas emissions
- Compostable
- Wide application range



### BOWLS

Material: PLA, - 20 °C to + 50 °C

Article	Description	Size	Vol	Qty. per pack
153781	Bowl	120x94x52	360 ml	20x50
153784	Lid for 153781	120x94	-	20x50
153782	Bowl	180x122x57	600 ml	12x50
153785	Lid for 153782	180x122	-	12x50
153783	Bowl	180x147x44	800ml	6x50
153786	Lid for 153783	180x147	-	6x50



### EATING & DRINKING

Material: PLA, - 20 °C to + 50 °C

Article	Description	Size	Vol	Qty. per pack
153764	Cold drink cup 25 cl		250 ml	20x50
153765	Cold drink cup 36 cl		360 ml	20x50
153766	Cold drink cup 50 cl		500 ml	20x50
153767	Cold drink flat lid			20x50
153768	Cold drink dome lid			20x50
153763	Cold drink straw			100x100



#### EATING & DRINKING

Material: PLA, - 20 °C to + 50 °C

Article	Description	Size	Vol	Qty. per pack
153771	Spoons	150 mm		20x50
153772	Knives	170 mm		20x50
153773	Forks	160 mm		20x50
153776	Hot drink cup 28 cl		280 ml	20x50
153775	Hot drink cup 45 cl		450 ml	20x50

# Tableware made from bagasse

**Bagasse is the biomass** remaining after sugar cane has been crushed to extract the juice. By removing the cellulose fibres from this biomass you get a tree-free raw material that can be used to produce more environmentally sustainable disposable tableware, such as various containers for food and beverages as well as plates. It is a renewable raw material that is compostable.

The material meets the highest hygienic standards regarding food safety both in the US and in Europe. It can be used much in the same way as tableware made from paper or plastic. Bagasse tableware is very rigid and has good insulation properties.

## **Bagasse, advantages:**

- Made from renewable materials
- Breaks down to compost
- Meets highest hygienic standards





**FIBRE PLATES**

Material: Bagasse (sugar cane fiber)

Article	Description	Size	Qty. per pack
149749	Fibre plate	Ø 18 cm	10x50
149750	Fibre plate, deep	Ø 16 cm	10x50
149751	Fibre plate	Ø 22 cm	10x50
149752	Fibre plate, oval	Ø 22 cm	10x50
149748	Fibre plate	Ø 26 cm	10x50



[www.duni.com](http://www.duni.com)

