



FoodSolutions 2010
Good Food Deserves Good Packaging



Providing outstanding functionality for over 60 years

Welcome to Duni FoodSolutions and the 2010 edition of our catalogue. Duni FoodSolutions is Duni's special division for high quality packaging solutions for the food service industry. If you already know us, you will recognise many of our tried and true products – plus some new and upgraded ones. If you are new to Duni FoodSolutions, then you are about to discover a whole new world of possibilities for making your food business run more smoothly and efficiently with unique solutions that add significant value to your operation.

Duni FoodSolutions is thoroughly dedicated to providing your business with reliable functionality and this has been our mission statement since our very beginning. Since then, we have devised endless solutions, such as sealable and non-sealable food packaging – many designed in-house – to allow our customers to keep up with the rapidly changing trends and needs of their customers.

Our commitment to the environment

We also take protecting the environment seriously. Therefore, we emphasise on select materials for our products that have the lowest possible impact on the natural world and regularly evaluate new environmentally friendly materials, as well. Moreover, for Duni, being a responsible company does not stop

at protecting the environment. We must also be accountable for how our operations affect people. Therefore, Duni sites and our suppliers must comply with the requirements in our Code of Conduct, which defines the basic right of employees based on ILO (International Labour Organization) conventions. For more information on Duni Environmental and Social Responsibility, please visit: www.duni.com/responsibility.

We hope you enjoy FoodSolutions 2010 – we're sure you'll find some great ideas for making your food operation run even better with Duni innovativeness, reliability and functionality.

Your Duni Team



Content

NEW

New in 2010

New solutions to make your business even better.

Pages 4 – 5



Duni ecoecho™

Taking environmental responsibility seriously, with our Duni ecoecho™ products.

Pages 6 – 7



Customization

- Embossed packaging
- Build your brand image

Pages 8 – 9



Boxes

- Octaview® Boxes
- Salad, soup and sandwich
- Box concepts

Pages 10 – 29



Fine Food Solutions

- Fine Food Line
- Duni Amuse-bouche®

Pages 30 – 33



Fixpack® & Delipack

- Fixpack® round/square
- Delipack round/square

Pages 34 – 37



Cardboard, Aluminium & Viking®

- Cardboard
- Viking® trays
- Aluminium trays

Pages 38 – 41



Serving Accessories

- Dessert solutions
- Cutlery
- Plates
- Serving platters

Pages 42 – 47



DUNIFORM®

- State-of-the-art trays and films.

Pages 48 – 69



DUNIFORM®

- Tried-and-true workhorses, plus some new ones

Pages 70 – 85



DUNIFORM®

- Transport solutions
- Equipment

Pages 86 – 89

Material Guide

Find the right material for every purpose.

Page 90

So what's new?



At Duni, we never stop trying to find new ways to inspire you. We design each new product to allow you to add maximum functionality to your operation. We hope you enjoy these new ideas.

Duni Trigo™

The design of the new Duni Trigo™ Bowl achieves some very useful benefits, e.g. it keeps food hot and won't burn your fingers when you pick it up. This is due to its double-walled insulating effect using air chamber technology. The Duni Trigo™ Bowl has a tight lid to prevent spillage during transport, making it excellent for all types of hot food, like soups, noodles and stew. Perfect for take-away, and the ultra modern design enhances the eating experience, both in and outside the restaurant.

Page 20



Fixpack® has endless uses

This is a new, updated version of one of our most popular food containers. The Fixpack® has great quality, is strong and stable, is easy to open and close but is also very tight and secure to prevent any leakage. It has a myriad of uses, for example, for delis, salads, fruits, olives, side dishes and all types of occasions – a perfect complementary food container. Fixpack® has been one of our most popular products over the last years.

Page 34

Make things easy with Duni Gourmet™

Responding to customers' requests, we've now extended the Duni Gourmet™ Range to include square boxes. They are black and transparent with super clear lids, making them excellent for food presentation and exposure in a shelf. They can be sealed in a DUNIFORM® machine, as well.

Page 16





Take-Away Tray simplifies your operation

Our most successful DUNIFORM® tray range has become even better. We have improved the tray in several ways: it has improved de-nesting properties, better colour, more even thickness, an improved sealing rim for optimised sealing properties and improved surface structure. Altogether, the new Take-Away Tray is a more efficient tray to work with and a more attractive product to present to your customers.

Page 52

New Machines to streamline your business

The whole DUNIFORM® machine range has evolved and been renewed. All machines are made out of stainless steel. New for this year is the DF20 with a digital control panel, the DF32 with & without figure cutting, the DF44 and the DF36. The DF36 is nothing less than a unique table top machine that can seal trays up to the size of ½ GN with vacuum and modified atmosphere (MAP). In addition, it can also figure cut the sealing film around the tray for a more professional look.

Page 70



One film for all purposes

New for this year is our universal film range that can seal trays made out of PP, CPET & APET. It is a peelable film with anti-fog and is food safe to as high as 180°C. This makes it safe for reheating in microwave ovens as well as in conventional ovens.

Page 68



Meeting today's challenges with tomorrow's solutions.

Introducing Duni ecoecho™

To act and meet the challenges of today, we must use the solutions of tomorrow. And this means finding a variety of solutions. This is what the Duni ecoecho™ Range is all about.

In our Duni ecoecho™ Range, we use the best materials available with the goal of limiting the use of non-renewable resources. So we utilise innovative materials, which use a substantially smaller amount of fossil fuel resources to reduce our CO₂ footprint: materials that are natural, recycled, renewable or compostable.



The ultimate in recycling: rPET

Even more Duni ecoecho™: the Duni Sandwich and our new Service Platter range are manufactured using rPET. rPET is a material made out of used bottles, predominantly water bottles, which is recycled for making plastic products.

Pages 22, 46

An eye on tomorrow with PLA

Some of our Duni ecoecho™ Range salad bowls, deli food containers and dressing cups are manufactured using the PLA (polylactide), a plastic made using renewable materials, such as cornstarch and sugarcane. PLA is crystal clear and presents fresh food in its best light. And it's not just environmentally friendly – it looks great too!

Pages 18, 44



The mark of responsible forestry

DNV-COC-000148

© 1996 Forest Stewardship Council A.C.

Attractive and earth-friendly: Cardboards & PLA

An important part of Duni's environmental strategy is responsible forestry. In 2009, many of Duni's products were FSC (Forest Stewardship Council) Mixed Sources certified. The FSC assures that forests are managed in a way that meets the social, economic and ecological needs of present and future generations. This year, we have a variety of products manufactured using cardboard made of FSC (Forest Stewardship Council) paper as well as PLA (polylactide), a biodegradable plastic made from renewable resources used for packaging windows.

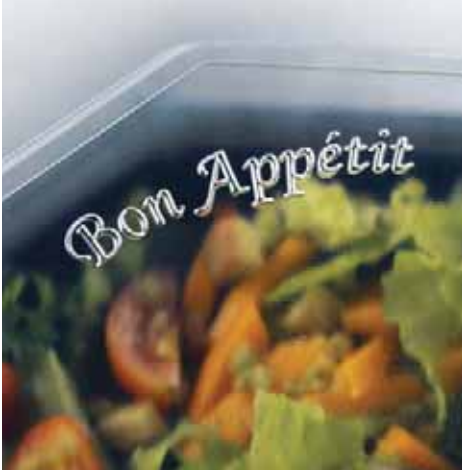
Page 38



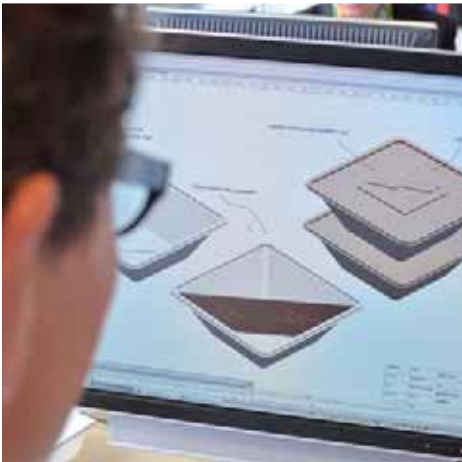


Make a lasting impression with Duni Customization

If you are in the take-away food business, then you know the importance of branding. To maximise awareness of your brand, Duni Customization makes it possible to offer your customers tailor-made products.



Customization is just another example of Duni being your optimal solution provider. We strongly believe in growing and developing together with our customers – and tailor-made solutions are the best example of this. With customized food containers and other products, you can be sure to differentiate yourself from the competition. Build your brand's image with a tailor-made embossed logo or message on your food container, or even an entirely custom designed food container for take-out. To keep all our customized products cutting-edge, Duni even has its own food container designer, Thomas Thomsen.



Duni's Head of Food Container Design, Thomas Thomsen



Duni Boxes

Duni can provide you with a very large array of boxes in many sizes for all types of fresh and hot foods – from sushi, salads, soups and sandwiches to vegetables and delicious desserts. Expect fast delivery from a professional partner when you work with Duni. In addition, all our products are manufactured with a strong emphasis on social responsibility and environmental compatibility.





Octaview®

This is our best selling range. Octaview® boxes come in 5 sizes and have a whole range of applications – for hot food for immediate enjoyment or cold food to be kept fresh for consumption at a later time.

- Octaview® Cold Use
- Octaview® Hot Use

Pages 12 – 15



Salad, Soup and Sandwich Concepts

A variety of boxes for freshly made food – hot, cold or sealed:

- Duni Salad Concept
- Duni Soup Concept
- Duni Sandwich Concept

Pages 16 – 23



Box Concepts

A full range of boxes in difference sizes and dimensions: square, rectangular or triangular. Find exactly what you need.

- Expressions
- Dinner
- Lunch
- Snack
- Sushi

Pages 24 – 29



Octaview®: Cold Use

For salads and other cold foods, this range provides many ideal solutions. The black bottom section of the box enhances the look of your food and above; the clear lid optimally displays your food so people will be more tempted to buy it. It has a hinged lid to make filling easy and a secure lid to prevent any leakage – a very versatile and reliable box. Selected boxes in this range come equipped with a dressing glass that remains securely in place when the lid is shut, allowing the consumer to dress his salad right before eating it for maximum freshness.



Octaview®: Cold Use

- Convenient one-piece design
- Secure and functional stacking
- Anti-fog feature on selected boxes

Material: PS -4°C to +80°C

Sizes	1 Comp	1 Comp Deep	1 Comp Salad	7 Comp Insert
XS 118 x 118 mm	866013 200 ml, 60 mm height 375 pcs / Cart. 	116630 265 ml, 80 mm height 375 pcs / Cart. 		
				
S 160 x 160 mm	127765 400 ml, 60 mm height 405 pcs / Cart. 	127763 580 ml, 80 mm height 405 pcs / Cart. 	149867 450 ml/65 ml, 60 mm height 360 pcs / Cart. 	
				
M 190 x 190 mm	127800 640 ml, 60 mm height 270 pcs / Cart. 	127801 850 ml, 80 mm height 270 pcs / Cart. 	157541 950/90 ml, 70 mm height 240 pcs / Cart. 	
				
L 230 x 230 mm	127766 1000 ml, 50 mm height 190 pcs / Cart. 	127767 1300 ml, 80 mm height 180 pcs / Cart. 	149868 1250 ml/65 ml, 70 mm height 160 pcs / Cart. 	
				
XL 305 x 315 mm	149873 1800 ml, 60 mm height 75 pcs / Cart. 	149874 2500 ml, 80 mm height 75 pcs / Cart. 		118846 140 ml/6x180 ml 25 mm deep 150 pcs / Cart. 
				



Octaview®: Hot Use















These Octaview® boxes are high performance food containers, since they can be heated in a microwave oven and are able to withstand high temperatures. They can be used for hot meals for immediate enjoyment or cold food to be kept fresh and reheated at a later time.



Octaview®: Hot Use

- Convenient one-piece design
- Secure and functional stacking
- High performance for hot take-away meals

Material: PS -4°C to +100°C

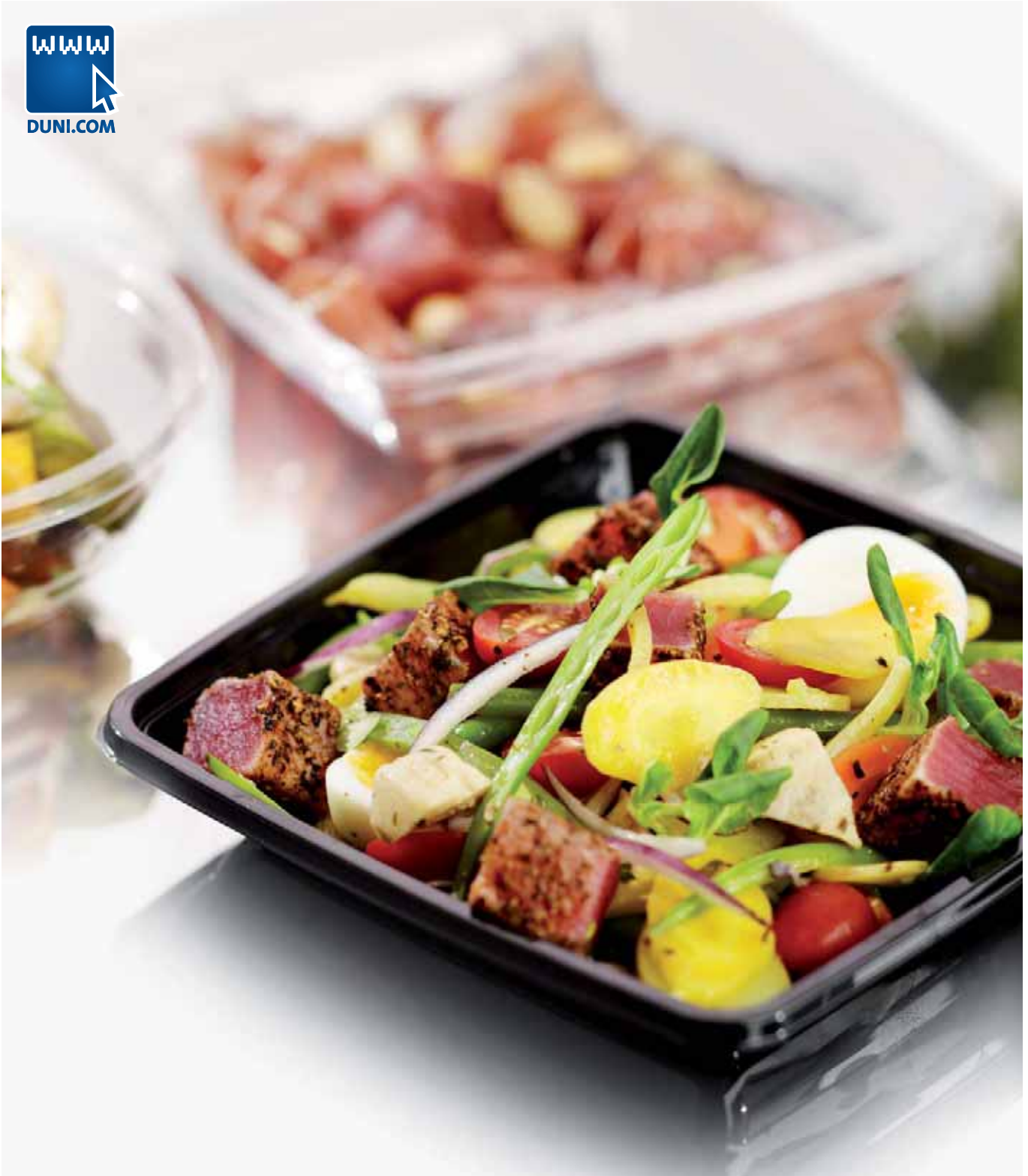
Sizes	1 Comp	2 Comp	3 Comp	Octabowl®
S 160 x 160 mm	149871 580 ml, 80 mm height 405 pcs / Cart. 			149864 500 ml, 72 mm height 405 pcs / Cart. 
				
M 190 x 190 mm		149869 350/200 ml, 60 mm height 290 pcs / Cart. 		149865 700 ml, 72 mm height 290 pcs / Cart. 
				
L 230 x 230 mm		149870 580/280 ml, 50 mm height 170 pcs / Cart. 	149872 220/220/650 ml 60 mm height 160 pcs / Cart. 	149866 1050 ml, 72 mm height 170 pcs / Cart. 
				



Duni Gourmet™ and Salad Concept

Now in the convenient square shape, too.

We designed these unique super clear salad bowls to be used either with a lid or sealed in one of our DUNIFORM® machines. The lid is designed to hold a Pick'n Eat or Pick'n Eat with napkin pack. Its attractive design highlights your salad without distracting from it. And to save you precious shelf space, it stacks very effectively. The easy opening and closing lid makes salad preparation more efficient and is very convenient for the consumer. Now available in the convenient and popular square shape.



Duni Gourmet™ Round

- Quick and easy to fill
- Superb transparency and strength
- Sealable – DUNIFORM® compatible



Material: APET -40°C to +70°C

Article	Description	Colour	Size (mm) LxWxH	Vol (ml)	Qty/ Cart.
154736*	Bowl	transparent	160x160x66	600	260
154733*	Bowl	indigo blue	160x160x66	600	260
154737**	Bowl	transparent	188x188x74	1000	240
154735**	Bowl	indigo blue	188x188x74	1000	240
154734	Flat Lid for 154736 / 154733	transparent	160x160x20	-	260
154732	Flat Lid for 154737 / 154735	transparent	188x188x20	-	240
155531	DUNIFORM® Lid for 154736 / 154733	transparent	160x160x22	-	260
155530	DUNIFORM® Lid for 154737 / 154735	transparent	188x188x22	-	240

* DF10/DF20 cassette, 155497 (1 cav.), also available

** DF10/DF20 cassette, 155498 (1 cav.), also available

For info about Pick'n Eat see page 44



Duni Gourmet™ Square

- Excellent shelf impact
- Superb transparency and strength
- Sealable – DUNIFORM® compatible



Material: APET -40°C to +70°C

Article	Description	Colour	Size (mm) LxWxH	Vol (ml)	Qty/ Cart.
159853 NEW	Square Salad Box	black	197x197x44	1000	450
159115 NEW	Square Salad Box	transparent	197x197x44	1000	450
159114 NEW	Square Box	black	197x197x33	750	450
159112 NEW	Square Lid for 159114 / 159115	transparent	198x198x18	-	450



Catering Bowl

- Easy opening and closure
- Quick and easy to fill
- Secure closure design



Material: APET -40°C to +70°C

Article	Description	Colour	Size (mm) LxWxH	Vol (ml)	Qty/ Cart.
153498	Bowl Large	black	250x250x95	2250	50
153501	Flat Lid for 153498	transparent	250x250x30	-	50
153499	Bowl XL	blue	310x310x110	4500	50
153503	Bowl XL	black	310x310x110	4500	50
153502	Flat Lid for 153499 / 153503	transparent	310x310x30	-	50





Salad Bowls, Deli Trays and Dressing Cups

From the new Duni ecoecho™ Range

These Salad Bowls, Deli Trays and Dressing Cups are made of PLA and form part of the new Duni ecoecho™ Range. PLA is renewable and has excellent transparency. In our Duni ecoecho™, we use the best materials available with the goal of limiting the use of non-renewable resources.



Salad Bowls, Deli Trays and Dressing Cups

- Made out of 100% renewable resources
- Superb transparency



Material: PLA -20°C to +40°C

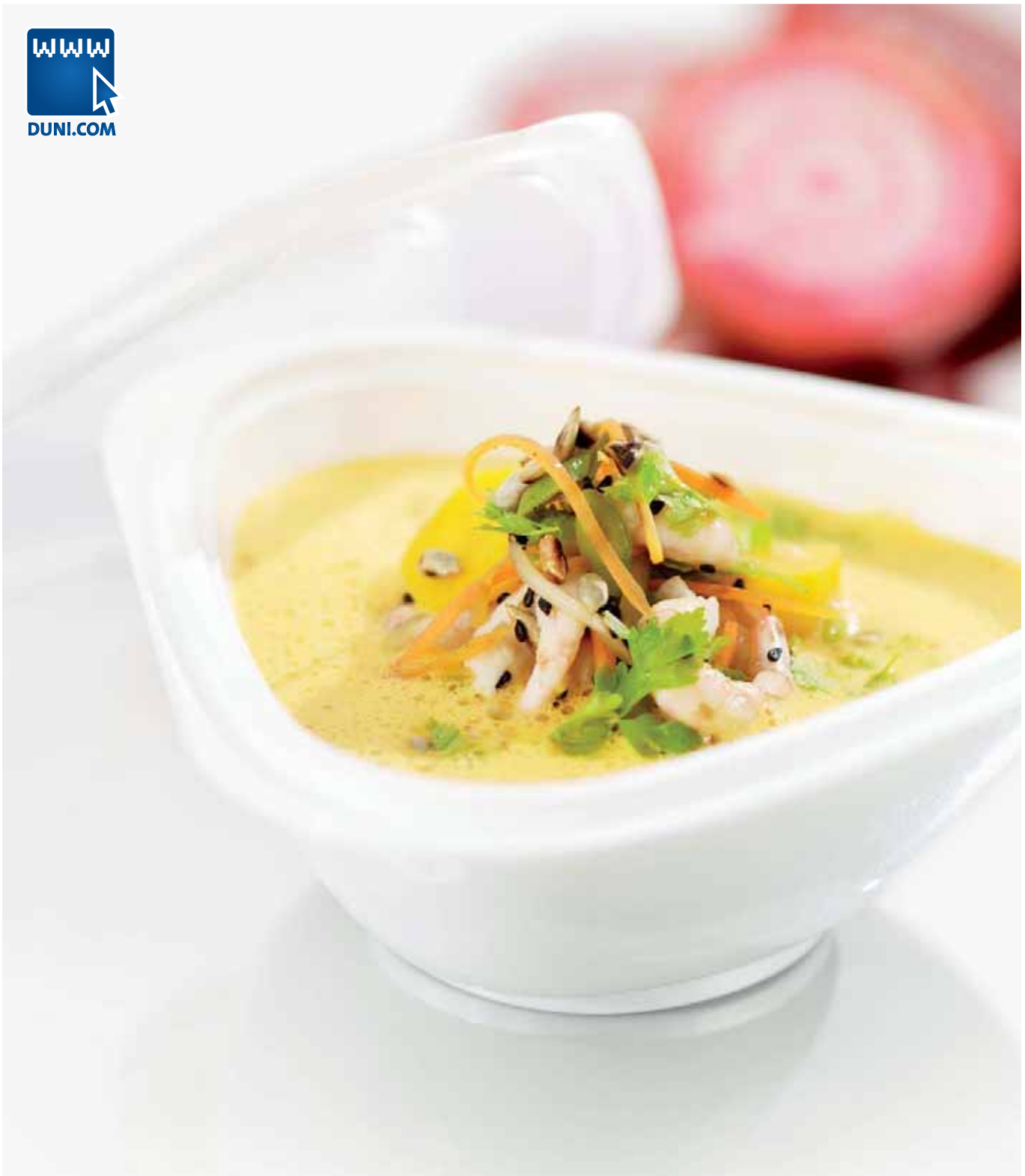
Article	Description	Colour	Size (mm) LxWxH	Vol (ml)	Qty/ Cart.
159862 NEW	Salad Bowl	transparent	220x220x45	700	45x6
159863 NEW	Salad Bowl	transparent	220x220x60	950	45x6
159864 NEW	Flat Lid for 159562/159863	transparent	230x220x30	-	45x6
159859 NEW	Tray Deli	transparent	150x125x30	230	50x12
159860 NEW	Tray Deli	transparent	150x125x50	350	50x12
159861 NEW	Flat Lid for 159859 / 159860	transparent	150x125x10	-	50x12
159865 NEW	Dressing Cup	transparent	62x30	60	250x12
159866 NEW	Flat Lid for 159865	transparent	65x5	-	250x12
159867 NEW	Dressing Cup	transparent	74x35	100	250x10
159868 NEW	Dressing Cup	transparent	74x47	120	250x10
159869 NEW	Flat Lid for 159867 / 159868	transparent	78x6	-	250x10



Boxes

The new Duni Trigo™ Bowl

The air chamber design keeps food hot and won't burn your fingers when you pick it up – thanks to its double-walled insulating effect. The Duni Trigo™ Bowl also has a tight lid to prevent spillage during transport, making it excellent for all types of hot food, like soups, noodles and stew. Perfect for take-away, and the ultra modern design enhances the eating experience, both in and outside the restaurant.



Duni Trigo™ Bowl

- No spillage and no burned hands
- Double chamber thermo function
- Customer freedom to reheat at home



Material: PP -20°C to +120°C

Article	Description	Colour	Size (mm) LxWxH	Vol (ml)	Qty/ Cart.
159873 NEW	Bowl Triangular Hot Food	white	175x165x55	450	250
159874 NEW	Lid for Bowl Triangular Hot Food	transparent	175x165x10	-	250



Soup Bowl

- Secure closure design



Material: APET -4°C to +80°C

Article	Description	Colour	Size (mm) LxWxH	Vol (ml)	Qty/ Cart.
778194 NEW	EPS Soup Thermo Bowl	white	115x115x76	460	500
778195 NEW	PS Lid for 778194	transparent	115x115x76	-	500



Basic Salad Bowl

- Two-piece design



Material: PS -4°C to +80°C

Article	Description	Colour	Size (mm) LxWxH	Vol (ml)	Qty/ Cart.
102970 NEW	Salad Bowl	transparent	180x180x75	1100	300
102971 NEW	Lid for 102970	transparent	186x186x12	-	300



Crystal Bowl

- Superb transparency and strength
- One-piece design
- Secure closure design



Material: APET -40°C to +70°C

Article	Description	Colour	Size (mm) LxWxH	Vol (ml)	Qty/ Cart.
778176 NEW	Crystal Bowl hinged Lid	transparent	150x110x50	250	800
778173 NEW	Crystal Bowl hinged Lid	transparent	170x140x55	500	600
101623 NEW	Crystal Bowl hinged Lid	transparent	200x170x60	750	300
778175 NEW	Crystal Bowl hinged Lid	transparent	210x170x70	1000	300





Duni ecoecho™ Range Sandwich Boxes

The Duni Sandwich Box assortment is also a part of Duni ecoecho™ Range and is manufactured using rPET. rPET is a material made out of used bottles, predominantly water bottles, which is recycled for making plastic products. By using recycled material the impact on the environment is greatly reduced, since CO₂ emissions are decreased as well as the amount of waste.



Sandwich Box

- Superb transparency and strength
- Secure and functional stacking
- Easy opening system



Material: rPET -40°C to +70°C

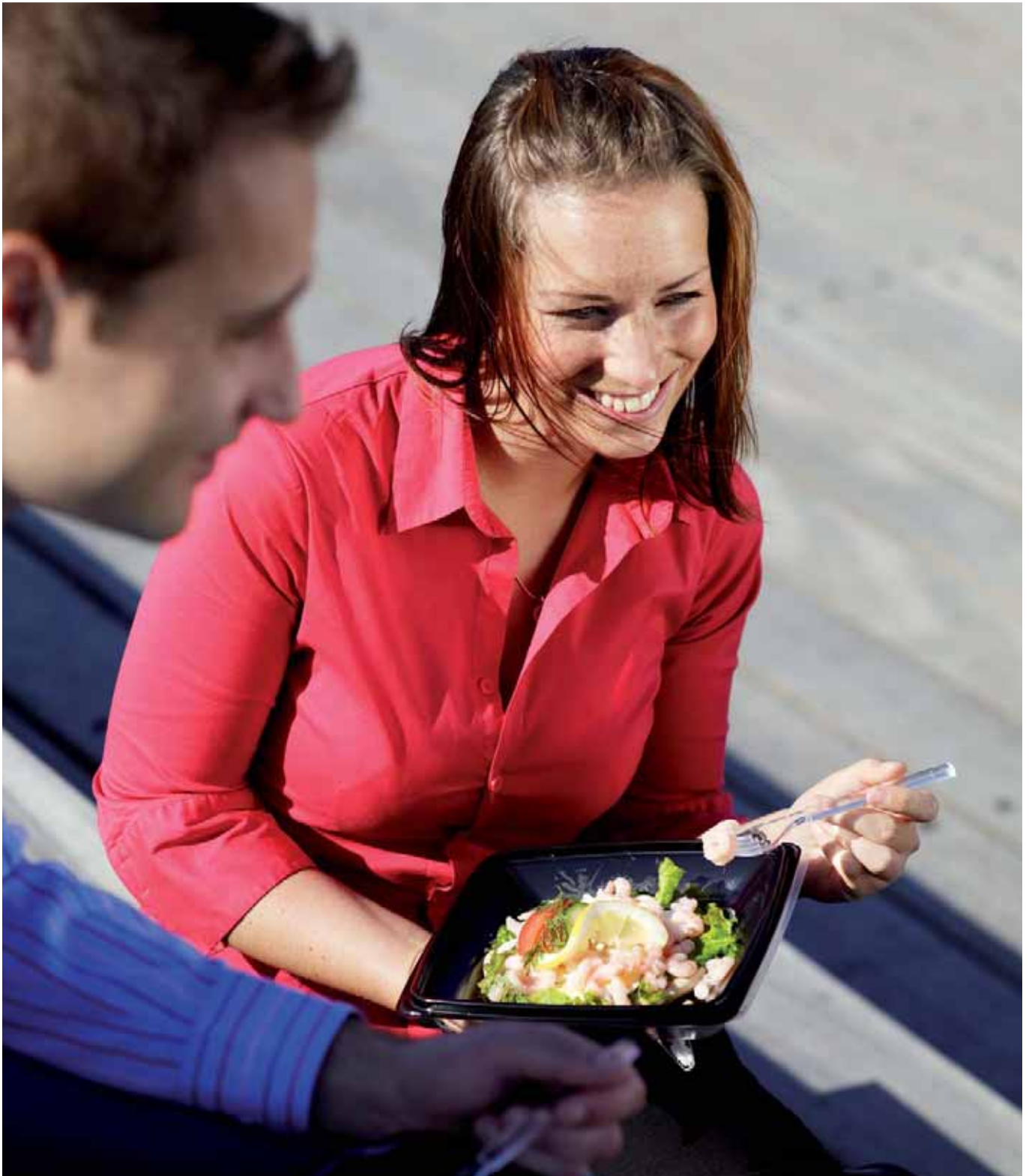
Article	Description	Comp	Size (mm) LxWxH	Vol (ml)	Qty/ Cart.
159416	Baguette Box small	1	170x80x75	350	700
159417	Baguette Box medium	1	225x80x75	500	350
156645	Baguette Box large	1	324x80x75	850	250
157107	Sandwich Wedge standard	1	160x85x55	350	600
157108	Sandwich Wedge double	1	160x85x65	500	500
157109	Sandwich Wedge triple	1	160x85x75	600	600
159567	Bagel Box small	1	118x85x60	400	700
157111	Bagel Box large	1	128x98x65	600	450





Expressions

Our collection of contemporary 2-piece containers is designed to enhance the look and feel of the dine-in or take-out experience. Available in 1, 2 and 3 compartments, this all-in-one solution combines features that reflect your needs, such as space efficiency, leak-resistant closure and microwarmable bottom – making it ideal for take-out food or disposable dine-in.



Expressions Box

- Dine-in or take-out design
- Two piece design
- Microwarmable bottom



Material: PS -4°C to +100°C



Article	Feature	Description	Comp	Size (mm) LxWxH	Vol (ml)	Qty/ Cart.
151751		Box	1	190x190x25	550	300
151750		Lid	-	190x190x30	-	300
151752		Box	1	230x230x25	850	150
151753		Lid	-	230x230x30	-	150
151754		Box	2	260x260x25	300/700	130
151755		Lid	2	260x260x30	-	130
157280		Box	3	260x260x25	560/200/200	130
157281		Lid	3	260x260x30	-	130

Triangular Box

- Secure closure design
- Easy opening system



Material: PS -4°C to +80°C



Article	Description	Comp	Size (mm) LxWxH	Vol (ml)	Qty/ Cart.
150221	Triangular Box	1	234x169x55	410	200
118971	Triangular Box	1	270x209x55	900	100

Dinner, lunch and snack solutions

Our assortment of meal boxes comprised of versatile and attractive packaging solutions with up to four compartments allows you to serve meals with many side offers or salad. Results of using this box are operational gains and freshness, by preparing meals beforehand and then finishing the order at the point of sales. The boxes are microwarmable, giving the consumer the option to reheat the food.



Dinner Box

- High performance for hot take-away meals
- Secure closure design
- Venting holes



Material: PS -4°C to +100°C

Article	Description	Comp	Size (mm) LxWxH	Vol (ml)	Qty/ Cart.
660756	Dinner Box	1	292x204x75	1900	100
660757	Dinner Box	2	292x204x75	700/1000	100
660758	Dinner Box	3	292x204x75	300/300/1000	100
660759	Dinner Box	4	292x204x75	200/200/140/820	100



Lunch/Snack Box

- High performance for hot take-away meals
- Secure closure design



Material: PS -4°C to +80°C

Article	Feature	Description	Comp	Size (mm) LxWxH	Vol (ml)	Qty/ Cart.
146152		Lunch Box	1	220x157x55	700	200
146153		Lunch Box	1	220x157x75	880	200
136353		Snack Box	2	223x113x67	300/150	200
146150		Lunch Box	1	216x232x60	1100	100
146151		Lunch Box	1	216x232x60	750/400	100





Basic lunch, snack and sushi solutions

Our range of basic lunch and snack boxes feature an easy to open and close closure function. These boxes are ideal for quick assembly of pre-packed food. Duni offers an attractive sushi box with an authentic embossing (which says sushi in Japanese) and an anti-fog lid.



Sushi Box

- High lid protects content
- Authentic oriental embossment
- Antifog feature



Material: PS -4°C to +80°C



Article	Description	Comp	Size (mm) LxWxH	Vol (ml)	Qty/ Cart.
144209	Box "Sushi" Embossed	1	185x135x55	500	200

Lunch/Snack Box

- Easy opening system
- One-piece design



Material: PS -4°C to +80°C



Article	Description	Comp	Size (mm) LxWxH	Vol (ml)	Qty/ Cart.
116109	Snack Box	1	158x140x56	570	200
127806	Lunch Box	1	272x188x53	1100	160
118962	Snack Box	1	270x135x54	750	160
127802	Lunch Box white	4	338x250x63	1800	100
127803	Lunch Box white	1	338x250x63	1800	100
127804	Lunch Box black	4	338x250x63	1800	100
127805	Lunch Box white	4	338x250x51	1800	100
112205	Lunch Box	1	270x135x54	750	200



Fine Food Solutions

This Duni assortment is especially designed for fine restaurants and delis that also offer their delicacies for take-away. These plates, trays, and transport boxes are not just functional – they also match the the premium quality of the delicacies within them. These Duni products are the marriage of functionality and aesthetics. This ranges includes a large array of design, presentation and branding possibilities.



Fine Food Line

Duni's Fine Food Line is especially for customers who see the delicacies they prepare as art and therefore expect only the best. This range is flexible and can be used for all kinds of occasions and food types. Ideal for fine take-away, hotel room service and business lunches. Convenient and stackable.



Fine Food Line

- Sophisticated and elegant design in high quality
- Made to enhance the dining experience



Material: PS -4°C to +80°C



Article	Description	Colour	Size	Size (mm) LxWxH	Qty/ Cart.
149888	Side Plate	chocolate	S	90x90x17	24x65
149890	Side Plate	chocolate	M	180x90x17	12x65
149892	Plate	chocolate	L	180x180x17	6x70
150839	Side Plate	transparent	S	90x90x17	24x65
150838	Side Plate	transparent	M	180x90x17	12x65
150840	Plate	transparent	L	180x180x17	6x70
149889	Side Plate Lid for 149888/150839	transparent	S	95x95x46	24x65
149891	Side Plate Lid for 149890/150838	transparent	M	185x95x46	12x65
149893	Plate Lid for 149892/150840	transparent	L	185x185x46	6x70
149895	Lid for Transport Box	champagne	-	362x332x75	100
149894	Tray for Transport Box	champagne	-	405x373x29	100
153788	To Go Transport Box	white	-	190x190x120	200



Duni Amuse-bouche®


The French term Amuse-bouche can literally be translated as "mouth amuser", and this is what the new range is all about. Duni Amuse-bouche® is ideal for all kinds of servings. With a truly eye-catching design and superb transparency it is the natural choice for high-end caterers who want to serve their delicacies as artistic, single bite creations.



Duni Amuse-bouche®

- Eye-catching design
- Superb transparency

Material: PS -4°C to +80°C

Article	Feature	Description	Vol (ml)	Colour	Size (mm) LxWxH	Qty/ Cart.
157491		Square	60	transparent	49x49x46	6x100
157499		Lid for Square	-	transparent	49x49x8	6x100
157489		Globe	25	transparent	62x62x54	6x30
157498		Lid for Globe	-	transparent	62x62x35	6x60
157486		Wave	10	transparent	97x43x24	6x80
157487		Lake	50	transparent	97x59x18	6x90
157488		Food Tube	35	transparent	35x35x58	6x65
157502		Tiny Fork	-	transparent	96x18	6x250
157503		Tiny Spoon	-	transparent	95x19	6x250
159058	NEW	Box	-	white	450x295x80	1x40
159059	NEW	Box	-	white	443x285x32	1x40
159718	NEW	Cradle	55	transparent	443x285x32	6x69
159719	NEW	Adds	55	transparent	47x47x46	6x44
159720	NEW	Stick	-	transparent	92x6x4	6x1200
159721	NEW	Square large	150	transparent	58x58x68	6x38
159723	NEW	Lid for Square large	-	transparent	61x61x11	6x38
159722	NEW	Tri large	110	transparent	63x63x68	6x56
159724	NEW	Lid for Tri large	-	transparent	66x66x11	6x56



Fixpack® & Delipack

For quality and value for money, these are your best bet. And Fixpack® has now had a makeover!



Fixpack®

The updated and redesigned Fixpack® features a secure closure and multipurpose design and appeals to customers looking for a simple solution they can rely on. These high quality containers are perfect for the deli counter where small portions are sold. Important is: the content should stay securely inside during transport. Fixpack® comes in round and rectangular microwarmable containers in different sizes, and features unique versatility and quality. For each shape one lid fits all – which simplifies stock keeping.



Fixpack® round

- Multipurpose
- One lid fits all
- Secure closure design



Material: PP -20°C to +125°C

Article	Description	Comp	Size (mm) LxWxH	Vol (ml)	Qty/ Cart.
159141 NEW	Fixpack® round	1	112x112x40	200	50x14
159142 NEW	Fixpack® round	1	112x112x60	300	50x14
159143 NEW	Fixpack® Lid round	1	112x112x6	-	50x14



Fixpack® rectangular

- Multipurpose
- One lid fits all
- Secure closure design



Material: PP -20°C to +125°C

Article	Description	Comp	Size (mm) LxWxH	Vol (ml)	Qty/ Cart.
159144 NEW	Fixpack® rectangular	1	146x110x40	350	50x10
159145 NEW	Fixpack® rectangular	1	146x110x55	500	50x10
159146 NEW	Fixpack® Lid rectangular	1	146x110x6	-	50x10



Fixpack® portion cup

- Multipurpose
- Secure closure design



Material: PS -4°C to +80°C

Article	Description	Comp	Size (mm) LxWxH	Vol (ml)	Qty/ Cart.
93002	Fixpack®	1	70x70x50	110	1000
93821	Fixpack® Lid flat	-	75x75x9	-	1005



Delipack

The Delipack is our basic container range, featuring a secure closure and multipurpose design. All boxes are microwarmable and available in both round and rectangular shapes. For each shape one lid fits all – which simplifies stock keeping. Delipack is also economical.



Delipack round

- Multipurpose
- One lid fits all
- Secure closure design



Material: PP -20°C to +125°C

Article	Description	Comp	Size (mm) LxWxH	Vol (ml)	Qty/ Cart.
156421	Delipack round	1	101x101x30	125	1000
156422	Delipack round	1	101x101x37	200	1000
156423	Delipack round	1	101x101x48	250	1000
156424	Delipack round	1	101x101x61	300	1000
156425	Delipack round	1	101x101x102	500	1000
156426	Delipack Lid round	-	101x101	-	1000



Delipack rectangular

- Multipurpose
- One lid fits all
- Secure closure design



Material: PP -20°C to +125°C

Article	Description	Comp	Size (mm) LxWxH	Vol (ml)	Qty/ Cart.
156427	Delipack rectangular	1	108x82x30	125	1000
156428	Delipack rectangular	1	108x82x50	250	1000
156430	Delipack rectangular	1	108x82x56	300	1000
156420	Delipack rectangular	1	108x82x100	500	1000
156429	Delipack Lid rectangular	-	108x82	-	1000





Cardboard, Viking® & Aluminium Trays

This year, we have a variety of products for efficient transport and display of fresh products, some familiar and some new and revolutionary.



Duni ecoecho™ Range Cardboard



For transporting fresh food such as sandwiches, salads, wraps and breads very attractively, choose our Duni ecoecho™ Range Cardboard. This year, we have a variety of products manufactured using cardboard made of FSC (Forest Stewardship Council) paper and PLA (polylactide) – a biodegradable plastic made from renewable resources such as cornstarch and sugarcane – for the windows. A range of these products can also be used in our DF Machines.





This product range is FSC certified



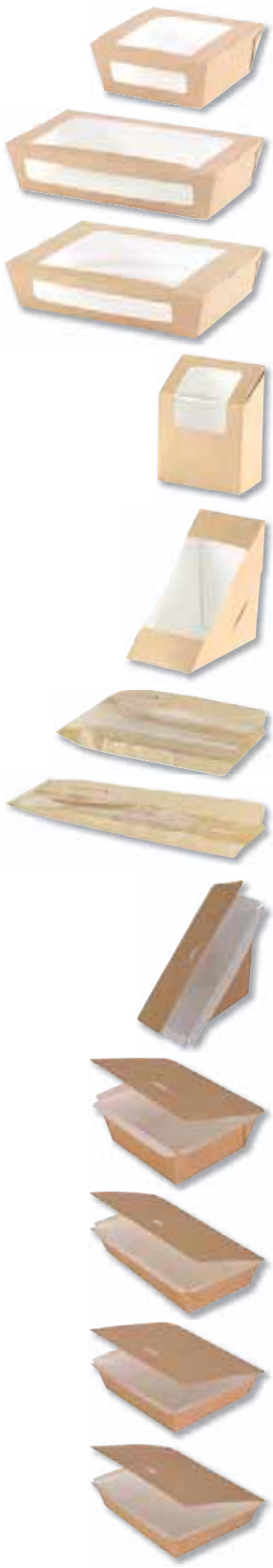
PLA/Cardboard Trays

- Super clear windows
- Superior product presentation
- FSC certified Cardboard and windows of renewable material

Material: Cardboard +20°C to +125°C

PLA -20°C to +40°C

NatureFlex™ -20°C to +80°C



Article	Description	Comp	Cassettes	Size (mm) LxWxH	Vol (ml)	Qty/ Cart.
159908	NEW Box rectangular with windows	1	-	90x100x45	450	200
159909	NEW Box rectangular with windows	1	-	180x135x45	1200	200
159910	NEW Box rectangular with windows	1	-	180x100x45	900	250
159911	NEW Box wrap with window	1	-	130x90x50	-	1000
159912	NEW Box Sandwich double wedge with window	1	-	170x120x70	-	500
159913*	NEW Paper Bag for roll/bagel/muffin	1	-	100x150x355	-	1000
159914*	NEW Paper Bag for baguette	1	-	150x215x80	-	1000
159791	NEW Cardboard Tray Sandwich	1	Cassette 160054 DF10	170x75x90	-	500
Clear window under the removable cardboard cover.						
159790	NEW Cardboard Tray Square	1	Cassette 160053 DF10/20	115x115x50	550	250
Clear window under the removable cardboard cover.						
159789	NEW Cardboard Tray Rectangular	1	Cassette 160051 DF10/20	200x120x45	900	250
Clear window under the removable cardboard cover.						
159793	NEW Cardboard Tray Square	1	Cassette 160050 DF10/20	165x165x45	1000	250
Clear window under the removable cardboard cover.						
159792	NEW Cardboard Tray Rectangular	1	Cassette 160052 DF10/20	195x165x45	1200	250
Clear window under the removable cardboard cover.						

* Made of NatureFlex™



Viking® & Aluminium Trays

The Viking® concept is for customers who need a solution that saves them space and weight and where handling needs to be fast and easy. The trays come partly assembled and when eating, the base opens up to a plate – very convenient! And Duni also offers a wide range of sturdy aluminium boxes for transporting both hot and cold foods.



Viking® Tray

- Space and weight-saving concept
- Base opens to a plate
- Partly assembled



Material: PAP/PP -20°C to +125°C

Article	Description	Comp	Size (mm) LxWxH	Vol (ml)	Qty/ Cart.
200623	Viking® Tray white	1	210x150x50	900	250
200911	Viking® Lid with window + blue/green stripes	-	210x150x30	-	250
200923	Viking® Lid printed with blue cutlery	-	210x150x30	-	250
152854	Viking® Lid white	-	210x150x30	-	250
200660	Viking® Tray with hinged Lid white	1	220x170x50	900	100
142980	Plate sausages white	-	130x200	-	1000



Aluminium Tray

- Tray oven proof up to 250°C
- Various shapes and sizes
- Matching lids



Material: PAP/PP -20°C to +125°C

Material: Alu -20°C to +250°C

Article	Description	Comp	Size (mm) LxWxH	Vol (ml)	Qty/ Cart.
150404	Aluminium Tray with white paper Lid	1	140x115x35	450	400
150405	Aluminium Tray with white paper Lid	1	220x128x33	700	400
150406	Aluminium Tray with white paper Lid	1	220x155x38	850	400
150407	Aluminium Tray with aluminium Lid	1	313x212x43	2200	100
150408	Aluminium Tray with aluminium Lid	1	323x262x43	2700	100
150409	Aluminium Tray with aluminium Lid	1	325x265x55	3500	100
150410	Aluminium Tray with aluminium Lid	1	527x326x37	5200	40
150412	Aluminium Tray with aluminium Lid	1	527x326x80	10000	40





Serving Accessories

The Duni Serving Accessories range offers both disposable and reusable products. Again, the key words here are functionality, convenience and, of course, quality.



Everything you'll need for eating and drinking

You'll find products that fit all kinds of situations. You can choose from a wide range of plates, cutlery, glasses and cups in different qualities. Have a look!



Dessert Solution

- Great looking dessert solutions
- Superb transparency
- Easy opening lids

Material: PS -4°C to +80°C

Article	Description	Size (mm) LxWxH	Vol (ml)	Qty/ Cart.
127724	Crystallo Cup	92x92x92	260	480
118890	Dome Lid for 127724	96x96x26	-	500
111255	Flat Lid for 127724	96x96x6	-	2000
119568	Bowl	104x104x41	250	1500
118872	Lid for 119568	105x105x13	-	1500
157175	Bowl Dessert	85x85x42	180	1000
157176	Bowl Dessert	95x95x46	230	1000
157177	Lid for Bowl Dessert 157175	92x92x12	-	1000
157178	Lid for Bowl Dessert 157176	100x100x12	-	1000
127730	Portion Cup	53x53x43	65	3400
127731	Lid for Portion Cup 127730	57x57x6	-	3400



Glasses Trend

- Great looking dessert solutions
- Superb transparency
- Easy opening lids



Material: PS -20°C to +40°C

Article	Description	Vol (ml)	Qty/ Cart.
153395	Glass Plastic Trend	160	1000
153396	Glass Plastic Trend	250	1000
153397	Glass Plastic Trend	300	1000
153398	Glass Plastic Trend	390	1000
153399	Glass Plastic Trend	620	400
153413	Lid Plastic Trend for 153397/153398	-	1000
157174	Lid Plastic Trend for 153399	-	1280



Cutlery

· Smart, space-saving solutions

Material: PS -4°C to +80°C



Article	Description	Material	Size (mm)	Qty/ Cart.
111278	Napkin, Knife, Fork	PAP/PS	160	250
119030	Napkin, Knife, Fork with Pepper & Salt	PAP/PS	160	250
111279	Napkin, Knife, Fork, Spoon with Pepper & Salt	PAP/PS	160	250
153985	Knife – single wrapped	PS	195	250
153984	Fork – single wrapped	PS	165	250
118957	Chip Fork	PS	85	5x1000

Cutlery

· Smart, space-saving solutions



Material: CPLA -20°C to +80°C



Article	Description	Material	Size (mm)	Qty/ Cart.
159714	NEW BIO heat-resistant knives	PS	10	100
159715	NEW BIO heat-resistant forks	PS	10	100
159716	NEW BIO heat-resistant spoons	PS	10	100

Pick'n Eat

· Multifunctional design
· Fits into Duni Salad Bowl Concept Lid

Material: PAP/PS -4°C to +80°C



Article	Description	Colour	Size (mm) LxWxH	Qty/ Cart.
149144	Pick'n Eat with napkin	transparent/white	105x20	500
149292	Pick'n Eat	transparent	105x20	4x250

Plastic Plates

- More rigid than paper plates
- Ideal portion size
- Matching transparent lid

Material: PS -4°C to +80°C

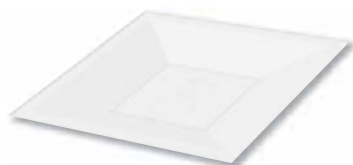


Article	Description	Colour	Size Ø (mm)	Qty/ Cart.
152116	Plastic Plate	white	180	10x50
141610	Plastic Plate	black	260	2x50
92361	Plastic Plate	white	260	2x50
93962	Lid for Ø 260 mm	transparent	260	2x50

Premium Plates

- Eye-catching design

Material: PS -4°C to +80°C



Article	Description	Colour	Comp	LxWxH (mm)	Qty/ Cart.
157194	Plate Premium square	frosted	1	220x220x10	20x6
157195	Plate Premium square	frosted	1	260x260x10	20x6

Fiber Plates

- Unbleached
- Bio



Material: Bagasse -4°C to +107°C



Article	Description	Colour	Comp	Size Ø (mm)	Qty/ Cart.
157179 NEW	Plate oval	unbleached	1	220	10x50
157180 NEW	Plate oval fiber	unbleached	1	220	9x50
157181	Plate soup	unbleached	1	160	10x50
157182	Plate fiber	unbleached	1	180	8x50
157183	Plate fiber	unbleached	1	260	10x50



Serving Platters

Duni Service Platters come in a variety of shapes, sizes and qualities. They are perfect for everything from hot main courses to salads and desserts and are made of rPET. Perfect for caterers that want to serve their hors d'oeuvres in style and events where food is prepared beforehand and transported and placed directly on the buffet table.



Serving Platters with Lids

- Serving trays for excellent display of the food on the buffet
- Tight and clear lids perfect for transportation
- Made of recycled PET material



Material: rPET -40°C to +70°C

Article	Description	Colour	Size (mm) LxWxH	Qty/ Cart.
159794 NEW	Platter octagonal	black	305X305X25	50
159798 NEW	Lid octagonal	transparent	305x305x49	50
159795 NEW	Platter octagonal	black	360X240X25	50
159799 NEW	Lid octagonal	transparent	360X240X49	50
159796 NEW	Platter octagonal	black	460X300X25	50
159800 NEW	Lid octagonal	transparent	460X300X63	50
159797 NEW	Platter rectangular	black	460X300X25	50
159801 NEW	Lid rectangular	transparent	460X300X63	50

Serving Platters

- Various shapes and sizes

Material: ALU -20°C to +250°C

Article	Description	Shape	Size Ø (mm) LxW	Qty/ Cart.
150400	Service Platter	oval	333x233	80
150401	Service Platter	oval	445x295	50
150402	Service Platter	oval	545x360	40





DUNIFORM[®]

At Duni, we take food packaging very seriously. This is because it has become much more than just a transport system and a part of the food product. Therefore, packaging has a significant impact on food's perception. What's more, consumers' expectations go beyond the surface today and insist on packaging being functional, as well. Duni's expertise lies in helping you find the right combination of tray, sealing machine and film that will allow your business to grow. And as you grow, the flexible DUNIFORM[®] concept grows with you.



Trays

The DUNIFORM® tray range comes in different materials, such as PP, CPET, APET, which all have specific properties, e.g. different temperature durability & clarity levels.

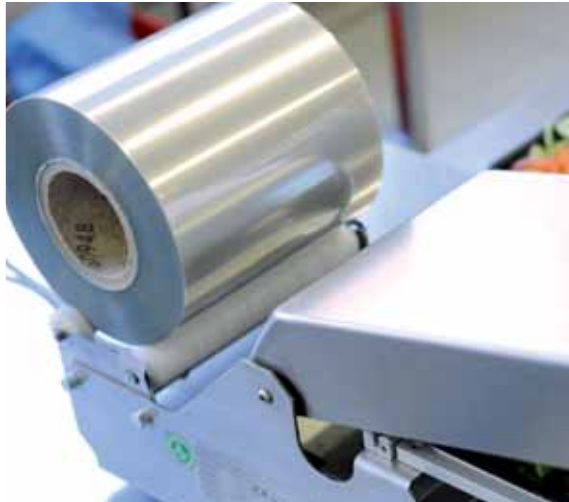
- PP Trays
- CPET Trays
- APET Trays
- Duni ecoecho™ Range

NEW

PLA/Cardboard, page 38



Page 50 – 67



Films

The sealing film assortment is divided into three categories, film for PP trays, PET trays and Universal film that seal on PP, CPET as well as on APET. The properties differ between the categories when it comes to anti-fog, cold peel, hot peel etc.

- PP Film
- PET Film
- Universal Film

NEW

Page 68 – 69



Machines

The range covers machines from manual to semi-automatic machines with or without vacuum & gas properties. All machines are made of stainless steel for maximum durability and safety.

- Manual machines
- Semi-automatic machines
- MAP machines

NEW

Page 70 – 85



Transport

To keep food hot or cold during lengthy food transports DUNIFORM® supplies a range of sturdy thermo bags, boxes and temperature control equipment.

- Thermo bags & boxes
- Temperature control equipment

NEW

Page 86 – 89



Trays for every purpose

The market for prepared and take-away food is growing immensely, and the demand for high quality secure packaging is growing with it. The DUNIFORM® tray range comes in a variety of materials, such as PP, CPET, APET, which all have specific properties, such as different temperature, durability & clarity levels. All tray solutions are accompanied by tailor-made sealing solutions.



PP side Dish Tray

The side dish trays are perfect when you want to offer a dessert or complementary food to the main dish. The sturdy design gives it excellent stackability properties.



PP – Side Dish Tray

- Strong wide rims
- Suitable for hot, cold, deli, vacuum and MAP
- Numerous size and colour options



Material: PP -20°C to +125°C

Article	Description	Comp	Colour	Cassette DF10/20	Size (mm) LxWxH	Vol (ml)	Qty/ Cart.
758512	PP Tray	1	black	140152 (2 cav.)*	138x114x35	350	300
758510	PP Tray	1	white	140152 (2 cav.)*	138x114x35	350	300
758516	PP Tray	1	transparent	140152 (2 cav.)*	138x114x35	350	300
758002	PP Tray	1	black	140152 (2 cav.)*	138x114x53	470	300
758000	PP Tray	1	white	140152 (2 cav.)*	138x114x53	470	300
758006	PP Tray	1	transparent	140152 (2 cav.)*	138x114x53	470	300
758602	PP Tray	1	black	140152 (2 cav.)*	138x114x70	630	276
758601	PP Tray	1	white	140152 (2 cav.)*	138x114x70	630	276
758606	PP Tray	1	transparent	140152 (2 cav.)*	138x114x70	630	276
757502	PP Tray	2	black	140153 (2 cav.)	138x114x53	240/120	480
757501	PP Tray	2	white	140153 (2 cav.)	138x114x53	240/120	480
757506	PP Tray	2	transparent	140153 (2 cav.)	138x114x53	240/120	480

*DF25 cassette, 152411 (4 cav.), also available



PP – Soup Bowl Tray

- Excellent de-nesting properties
- Perfect size for soup with handles for easy transportation
- Extra wide sealing rim



Material: PP -20°C to +125°C

Article	Description	Comp	Colour	Cassette DF10/20	Size (mm) LxWxH	Vol (ml)	Qty/ Cart.
147908	Soup Bowl	1	black	148354	153x153x60	500	480



CPET – Soup Bowl Tray

- De-nesting
- Perfect size for soup with handles for easy transportation
- Extra wide sealing rim



Material: CPET -40°C to +220°C

Article	Description	Comp	Colour	Cassette DF10/20	Size (mm) LxWxH	Vol (ml)	Qty/ Cart.
119142	Soup Bowl	1	white	148354	165x150x50	500	500





PP Take-Away Trays

The PP Take-Away range is available in 1, 2, 3 and 5 compartments, different depths and colours – a solution for a huge variety of requirements. A smaller tray for side dishes in CPET has been developed when heating in an oven is necessary. With its strong and wide rim, the Take-Away range is well suited for sealing, with or without MAP (Modified Atmosphere Packaging) technology. An APET lid is also available for saving unfinished meals. Perfect presentation, secure during transport and an enhanced eating experience are what best characterise the DUNIFORM® Take-Away range.



PP – Take-Away Trays

- Strong wide rims
- Suitable for hot, cold, deli, vacuum and MAP
- Numerous size and colour options



Material: PP -20°C to +125°C



Article	Description	Comp	Colour	Cassette DF10/20	Size (mm) LxWxH	Vol (ml)	Qty/ Cart.
149882 NEW	PP Tray	1	black	150020	250x159x43	1100	246
155054 NEW	PP Tray	1	white	150020	250x159x43	1100	246
154063 NEW	PP Tray	1	black	150020	250x159x55	1400	228
154486 NEW	PP Tray	1	white	150020	250x159x55	1400	228
154064 NEW	PP Tray	1	black	150020	250x159x70	1750	220
154487 NEW	PP Tray	1	white	150020	250x159x70	1750	220
149883 NEW	PP Tray	2	black	150021	250x159x45	700/400	246
155055 NEW	PP Tray	2	white	150021	250x159x45	700/400	246
149884 NEW	PP Tray	3	black	150022	250x159x48	550/350/200	246
155056 NEW	PP Tray	3	white	150022	250x159x48	550/350/200	246
154755 NEW	PP Tray	5	black	155621	250x159x46	85/115/180 /270/290	240

APET – Lid for Take-Away Trays

- Enables re-closure of the tray
- Gives the possibility to save unfinished meals

Material: PP -40°C to +70°C



Article	Description	Comp	Colour	Size (mm) LxWxH	Vol (ml)	Qty/ Cart.
155620	Take-Away Lid	-	transparent	256x163x12	-	246



PP – HMR Tray

- Strong wide rims
- Suitable for hot, cold, deli, vacuum and MAP



Material: PP -20°C to +125°C



Article	Description	Comp	Colour	Cassette DF10/20	Size (mm) LxWxH	Vol (ml)	Qty/ Cart.
105222	PP Tray HMR	1	black	140156*	215x148x40	800	200
700051	PP Tray HMR	1	white	140156*	215x148x40	800	200
105223	PP Tray HMR	1	black	140156*	215x148x50	1000	200
700052	PP Tray HMR	1	white	140156*	215x148x50	1000	200
149885	PP Tray HMR	1	black	140156*	215x148x70	1300	280
133706	PP Tray HMR	2	black	140154	215x148x50	700/200	200
700053	PP Tray HMR	2	white	140154	215x148x50	700/200	200
105224	PP Tray HMR	2	black	140155	215x148x50	500/400	200
101631	PP Tray HMR	2	white	140155	215x148x50	500/400	200

*DF25 cassette, 152415 (2 cav.), also available



PP – ¼ GN Menu Tray & PP – ¼ GN Tray

The standardized size of ¼ GN (Gastro norm) makes this tray range optimal for efficient distribution. Duni offers special transport solutions made to perfectly fit ¼ GN. Pack and serve single meal portions with our menu trays or family size portions in our deeper one compartment trays – this range covers it all.



PP – ¼ GN Menu Trays

- Strong wide rims
- Suitable for hot, cold, deli, vacuum and MAP
- Numerous size and colour options



Material: PP -20°C to +125°C



Article	Description	Comp	Colour	Cassette DF10/20	Size (mm) LxWxH	Vol (ml)	Qty/ Cart.
757102	PP Tray ¼ GN	1	black	140149*	265x162x40	1180	225
757110	PP Tray ¼ GN	1	white	140149*	265x162x40	1180	225
757106	PP Tray ¼ GN	1	transparent	140149*	265x162x40	1180	225
757202	PP Tray ¼ GN	2	black	140150**	265x162x43	630/500	225
757210	PP Tray ¼ GN	2	white	140150**	265x162x43	630/500	225
757302	PP Tray ¼ GN	3	black	140151***	265x162x45	500/380/210	225
757310	PP Tray ¼ GN	3	white	140151***	265x162x45	500/380/210	225

*DF25 cassette, 152407 (2 cav.), also available

**DF25 cassette, 152408 (2 cav.), also available

***DF25 cassette, 152406 (2 cav.), also available

PP – ¼ GN Trays

- Strong wide rims
- Suitable for hot, cold, deli, vacuum and MAP



Material: PP -20°C to +125°C



Article	Description	Comp	Colour	Cassette DF25	Size (mm) LxWxH	Vol (ml)	Qty/ Cart.
152347*	PP Tray ¼ GN	1	black	147611(2 cav.)**	265x161x35	1000	200
152346*	PP Tray ¼ GN	1	white	147611(2 cav.)**	265x161x35	1000	200
153505*	PP Tray ¼ GN	1	transparent	147611(2 cav.)**	265x161x35	1000	200
152345	PP Tray ¼ GN	1	black	147611(2 cav.)**	265x161x60	1650	200
152344	PP Tray ¼ GN	1	white	147611(2 cav.)**	265x161x60	1650	200
153507	PP Tray ¼ GN	1	transparent	147611(2 cav.)**	265x161x60	1650	200
115580	PP Tray ¼ GN	1	black	147611(2 cav.)***	265x161x80	2000	200
115680	PP Tray ¼ GN	1	white	147611(2 cav.)***	265x161x80	2000	200
153506	PP Tray ¼ GN	1	transparent	147611(2 cav.)***	265x161x80	2000	200
117100	PP Tray ¼ GN	1	black	147611(2 cav.)***	265x161x100	2600	192
118100	PP Tray ¼ GN	1	white	147611(2 cav.)***	265x161x100	2600	192

*While stocks last

**DF10/20 cassette, 147609, also available

***Can also be sealed in DF10 with cassette 147609

Duni Sous Scellage®

With the design-protected Duni Sous Scellage® tray, two worlds come together. It combines all the benefits of sous-vide, where the food is cooked in a sealed pouch, with all the advantages of a tray.



Duni Sous Scellage® – A truly innovative way of cooking

With the Sous Scellage® tray, food can be prepared, cooked, distributed and served using the same tray. Use an insert and two layers of food can be cooked at the same time in the same tray. The food is gently cooked in a sealed atmosphere at low temperatures (preferably below 75°C), which keeps all the delicious flavour and juices in the cooked product intact. The result is tender food cooked to perfection.



Improve your distribution and handling immensely with the Duni Sous Scellage®

Benefits:

- One tray for preparation, cooking and serving – also means less contamination risk
- MAP enables longer shelf life, so preparation can take place well in advance
- No contamination risk due to the hermetically sealed tray
- Improved storage, since less space is needed, you can store ¼ GN on the same space as ½ GN, due to the dual layer in the tray
- Reduced transport, no steel canteens have to be returned or washed

Maximise the quality of your food with Duni Sous Scellage®

Benefits:

- The gentle cooking in Duni Sous Scellage® retains vitamins in the food
- Taste and texture will still be good even if the food is cooked too long
- Food can stay warm without drying out
- Always new hygienic trays with Duni Sous Scellage®
- No additional staff training needed for baking off the food after it has been prepared and packaged

Duni Sous Scellage® provides the benefits of a combi-oven in a conventional oven

- Satellite kitchens only need to have a conventional oven to reach the same high end result as in a combi-oven. This is possible due to the construction and the hermetically sealed Duni Sous Scellage® tray.

PP – ½ GN Duni Sous Scellage® Tray

- Improves quality, distribution & handling
- Cook in tray
- 2 level cooking



Material: PP -20°C to +125°C



Article	Description	Comp	Colour	Cassette DF25	Size (mm) LxWxH	Vol (ml)	Qty/ Cart.
155600	Tray	1	silver	141550	325x265x87	5200	96
155601	Insert	-	white	-	332x227x3	-	200



PP – ½ & ½ GN Tray

- Suitable for hot, cold, deli, vacuum and MAP
- Numerous size and colour options



Material: PP -20°C to +125°C



Article	Description	Comp	Colour	Cassette DF25	Size (mm) LxWxH	Vol (ml)	Qty/ Cart.
142529	PP Tray ½ GN	1	white	150023	325x176x65	2500	144
133726	PP Tray ½ GN	1	black	141550	325x265x40	2700	100
114040	PP Tray ½ GN	1	white	141550	325x265x40	2700	100
114050	PP Tray ½ GN	1	white	141550	325x265x50	3400	100
115542	PP Tray ½ GN	1	black	141550	325x265x60	4000	100
114060	PP Tray ½ GN	1	white	141550	325x265x60	4000	100
115543	PP Tray ½ GN	1	black	141550	325x265x80	5000	96
114080	PP Tray ½ GN	1	white	141550	325x265x80	5000	96
143309	PP Tray ½ GN	1	blue	141550	325x265x80	5000	96
115544	PP Tray ½ GN	1	black	141550	325x265x100	6300	92
114100	PP Tray ½ GN	1	white	141550	325x265x100	6300	92
152510	PP Tray ½ GN	3	black	141550	325x265x50	800/800/800	100

APET – Lid for ½ GN Tray

- Improves presentation
- Enables re-closure after seal is broken

Material: APET -40°C to +70°C



Article	Description	Comp	Colour	Size (mm) LxWxH	Vol (ml)	Qty/ Cart.
180316	APET Lid ½ GN	1	transparent	325x265	-	90

CPET – Small Portion Tray

Small portion trays in CPET are ideal when you want to offer complementary dishes that need to be baked off at higher temperatures. Good for food or desserts.



CPET – Small Portion Tray

- Strong wide rims
- Suitable for hot, cold, deli, vacuum and MAP
- Ovenable



Material: CPET -40°C to +220°C

Article	Description	Comp	Colour	Cassette DF10/20	Size (mm) LxWxH	Vol (ml)	Qty/ Cart.
157356	Take-Away Tray small	1	black	157385	160x103x35	370	750
145689	Take-Away Tray small	1	white	157385	160x103x35	370	750
115483	CPET Tray	1	black	140249 (2 cav.)	171x127x35	510	900
115482	CPET Tray	1	white	140249 (2 cav.)	171x127x35	510	900
148217	CPET Tray	1	black	140249 (2 cav.)	171x127x50	670	840
151221	CPET Tray	1	white	140249 (2 cav.)	171x127x50	670	840
151304	CPET Tray	1	black	140163	187x137x34	600	520
151303	CPET Tray	1	white	140163	187x137x34	600	520
151375	CPET Tray	1	black	140163	187x137x40	700	480
151376	CPET Tray	1	white	140163	187x137x40	700	480
115489	CPET Tray	2	white	140189	187x137x36	260/300	640
115490	CPET Tray	1	white	140164**	188x119x36	525	750
115491	CPET Tray	1	white	140164**	188x119x54	760	480
138005	CPET Tray square	1	white	152401	100x100x50	300	1320
138006*	CPET Tray oval	1	white	152403	160x100x50	350	1100
138007	CPET Tray rectangular	1	white	152405	210x100x50	685	660

*While stocks last

**DF10/20 cassette, 140169 (2 cav.), also available



CPET – Menu & ½ GN Tray

This range is well suited for any kind of high volume catering. Its high heat resistance properties make it suitable for cooking or regenerating in the oven up to 220°C.

Prepare your portions in a central kitchen and regenerate them in satellite kitchens just in time.



CPET – Menu Tray

- Strong wide rims
- Suitable for hot, cold, deli, vacuum and MAP
- Ovenable



Material: CPET -40°C to +220°C

Article	Description	Comp	Colour	Cassette DF10/20	Size (mm) LxWxH	Vol (ml)	Qty/ Cart.
115495	CPET Tray	1	black	140162*	225x175x34	960	300
115494	CPET Tray	1	white	140162*	225x175x34	960	300
122018	CPET Tray	1	black	140162*	225x175x43	1200	300
115503	CPET Tray	1	white	140162*	225x175x43	1200	300
153414	CPET Tray	1	black	140162*	225x175x54	1500	270
153422	CPET Tray	1	white	140162*	225x175x54	1500	270
151305	CPET Tray	2	black	140160**	225x175x35	515/370	250
151306	CPET Tray	2	white	140160**	225x175x35	515/370	250
115505	CPET Tray	2	black	140160**	225x175x43	655/455	300
115504	CPET Tray	2	white	140160**	225x175x43	655/455	300
115502	CPET Tray	3	white	140159	225x175x34	350/300/200	350
151307	CPET Tray	3	black	140158***	225x175x34	430/225/165	250
151728	CPET Tray	3	white	140158***	225x175x34	430/225/165	250
115506	CPET Tray	3	black	140158***	225x175x43	525/275/205	300
132346	CPET Tray	3	white	140158***	225x175x43	525/275/205	300
147599	CPET Tray	3	black	147600	225x175x43	220/220/560	300

*DF25 cassette, 153432 (2 cav.), also available

**DF25 cassette, 153433 (2 cav.), also available

***DF25 cassette, 152440 (2 cav.), also available

CPET – ½ GN Tray

- Strong wide rims
- Suitable for hot, cold, deli, vacuum and MAP
- Ovenable



Material: CPET -40°C to +220°C

Article	Description	Comp	Colour	Cassette DF25	Size (mm) LxWxH	Vol (ml)	Qty/ Cart.
115511	CPET Tray	1	black	141550	325x265x50	3350	90
159586	CPET Tray	1	white	141550	325x265x50	3350	120
131280	CPET Tray	1	black	141550	325x265x79	5100	80
103726	CPET Tray	1	white	141550	325x265x79	5100	80

APET – Trays

The clear transparent features of APET make it ideal for cold cuts, sandwiches, salads and desserts. The APET trays from Duni are also excellent for MAP (Modified Atmosphere Packaging) providing extended shelf life and operational advantages.



APET – Trays

- Improves presentation
- Excellent clarity
- Suitable for cold dishes & MAP



Material: APET -40°C to +70°C



Article	Description	Comp	Colour	Cassette DF10/20	Size (mm) LxWxH	Vol (ml)	Qty/ Cart.
106793	APET Tray	1	transparent	147601	160x122x39	395	816



108024	APET Tray	1	transparent	140249 (2 cav.)	171x127x35	500	912
108025	APET Tray	1	transparent	140249 (2 cav.)	171x127x50	660	768



110062	APET Tray	1	transparent	147604	171x127x38	315/215	504
--------	-----------	---	-------------	--------	------------	---------	-----



153515	APET Tray*	1	transparent	140156***	215x148x25	400	200
--------	------------	---	-------------	-----------	------------	-----	-----



134146	APET Tray*	1	transparent	140156***	215x148x60	1200	200
--------	------------	---	-------------	-----------	------------	------	-----



108026	APET Tray	1	transparent	149999	227x178x50	1415	240
--------	-----------	---	-------------	--------	------------	------	-----



112060	APET Tray Baguette	1	transparent	140157****	260x110x68	1150	350
--------	--------------------	---	-------------	------------	------------	------	-----



Article	Description	Comp	Colour	Cassette DF25	Size (mm) LxWxH	Vol (ml)	Qty/ Cart.
129701	APET Sandwich Tray	1	transparent	152413 (4 cav.)**	185x95x86	95 mm	1600
129710	APET Sandwich Tray	1	transparent	152412 (6 cav.)	185x72x86	72 mm	1820

**DF10 cassette, 156500 (2 cav.), also available

***DF25 cassette, 152415 (2 cav.), also available

****DF25 cassette, 152414 (3 cav.), also available

***Same design also available in PP. No extra cassette needed.
See on page 55 PP – HMR Tray.**

Films, the key to freshness

DUNIFORM® offers a complete line of films for a myriad of applications. Here are some things we think you should know about our films.

Sealing Film for PP Trays

· Peelable films



Article	Cooking temp. max.	Sealing temp. (max. 190°C)	DF10	DF20	DF25	DF32	DF36	DF44	Anti-fog	Thick-ness	Size mm x m	Ø mm	Qty/ Cart.
147974	100	150 – 160°C	•	•	•	-	-	-	•	65 µ	154x250	174	1
700050	100	150 – 170°C	•	•	•	•	-	-	-	72 µ	170x150	148	1
147975	100	150 – 160°C	•	•	•	•	-	-	•	65 µ	172x250	174	1
147910	100	150 – 160°C	•	•	•	•	-	-	•	65 µ	185x250	174	1
108078	100	150 – 160°C	-	-	•	•	-	-	•	65 µ	230x500	227	1
107074	100	150 – 160°C	-	-	•	•	-	-	•	65 µ	272x500	227	1
106576	100	150 – 160°C	-	-	-	•	•	•	•	65 µ	315x500	227	1
107075	100	150 – 160°C	-	-	-	•	•	•	•	65 µ	340x500	227	1
107073	100	150 – 160°C	-	-	-	•	•	•	•	65 µ	380x500	227	1
191010 NEW	100	150 – 160°C	-	-	-	-	•	•	•	65 µ	390x500	227	1
151548	100	150 – 160°C	-	-	-	-	-	•	•	65 µ	415x500	227	1
759100	100	150 – 170°C	-	-	-	-	-	•	-	72 µ	430x300	190	1

Sealing Film for PET Trays

· Peelable films
· Self-venting
· Anti-fog



Article	Cooking temp. max.	Sealing temp. (max. 210°C)	DF10	DF20	DF25	DF32	DF36	DF44	Thick-ness	Size mm x m	Ø mm	Qty/ Cart.
155016	220	140 – 160°C	•	•	•	-	-	-	25 µ	115x500	160	1
155017	220	140 – 160°C	•	•	•	-	-	-	25 µ	130x500	160	1
155018	220	140 – 160°C	•	•	•	-	-	-	25 µ	154x500	160	1
155019	220	140 – 160°C	•	•	•	-	-	-	25 µ	185x500	160	1
155029	220	140 – 160°C	-	-	•	•	-	-	25 µ	240x500	160	1
155030	220	140 – 160°C	-	-	•	•	-	-	25 µ	272x500	160	1
155031	220	140 – 160°C	-	-	-	•	•	-	25 µ	290x500	160	1
155032	220	140 – 160°C	-	-	-	•	•	•	25 µ	340x500	160	1
155033	220	140 – 160°C	-	-	-	•	•	•	25 µ	380x500	160	1
191011 NEW	220	140 – 160°C	-	-	-	-	•	•	25 µ	390x500	160	1
155034	220	140 – 160°C	-	-	-	-	-	•	25 µ	410x500	160	1
155035	220	140 – 160°C	-	-	-	-	-	•	25 µ	446x500	160	1

Tips about DUNIFORM® films and sealing:

The most important questions when choosing the right film and tray are always:

- What task should the tray and film perform?
- What temperature will the tray and film be exposed to?

For example:

CPET trays can be heated up to 220°C. PP up to 125°C and APET up to 70°C. Our trays remain food safe below those temperatures. Please note: that it is not recommended to cook in CPET trays and then seal after cooking. This is due to the fact that the tray shrinks slightly and that the seal might not be 100% airtight after cooking.

- When you seal steaming food, please use a spike roll. It perforates the sealing film and allows the pressure to be released.
- Please perforate the film before you reheat it in an oven or microwave. Some films are self-venting which means that they will automatically open up to release steam, hence no need for perforation. If you reheat the tray in an oven (applies to PET film) before transporting it to its final destination, please use low temperatures. Low temperature will prevent the pressure in the tray to build up too fast and too high which can cause the film to break or come off.



Sealing Film for PET Trays

- Peelable films
- Anti-fog



Article	Cooking temp. max.	Sealing temp. (max. 190°C)	DF10	DF20	DF25	DF32	DF36	DF44	Thickness	Size mm x m	Ø mm	Qty/ Cart.
147976	85	130 – 160°C	•	•	•	•	-	-	65 µ	185x250	174	1
140949	85	130 – 160°C	-	-	•	•	-	-	65 µ	230x500	227	1
111930	85	130 – 160°C	-	-	•	•	-	-	65 µ	272x500	227	1
111940	85	130 – 160°C	-	-	-	•	•	•	65 µ	340x500	227	1
111942	85	130 – 160°C	-	-	-	•	•	•	65 µ	380x500	227	1

Sealing Film for PP and PET Trays

- Peelable films
- Anti-fog



Article	Cooking temp. max.	Sealing temp. (max. 210°C)	DF10	DF20	DF25	DF32	DF36	DF44	Thickness	Size mm x m	Ø mm	Qty/ Cart.
159847 NEW	180	160 – 210°C	•	•	•	-	-	-	42 µ	154x400	177	1
159848 NEW	180	160 – 210°C	•	•	•	•	-	-	42 µ	185x400	177	1
159849 NEW	180	160 – 210°C	-	-	•	•	-	-	42 µ	230x400	177	1
159850 NEW	180	160 – 210°C	-	-	•	•	-	-	42 µ	272x400	177	1
159851 NEW	180	160 – 210°C	-	-	-	•	•	•	42 µ	340x400	177	1
159843 NEW	180	160 – 210°C	-	-	-	•	•	•	42 µ	380x400	177	1
159844 NEW	180	160 – 210°C	-	-	-	-	•	•	42 µ	390x400	177	1
159845 NEW	180	160 – 210°C	-	-	-	-	-	•	42 µ	415x400	177	1
159846 NEW	180	160 – 210°C	-	-	-	-	-	•	42 µ	445x400	177	1

Machines

Duni offers a variety of machines in its DUNIFORM® sealing concept. Whatever your requirements or budget, we are certain you will find the right sealing solution for your operation.



Matrix of DF-Machines DUNIFORM®

General Information	DF10	DF20 <small>NEW</small>	DF25	DF32 <small>NEW</small>	DF36 <small>NEW</small>	DF44 <small>NEW</small>
Article number	700080	700095	700090	160900	191000	160901
Machine weight	13 kg	20 kg	43 kg	approx. 50 kg	approx. 85 kg	approx. 190 kg
Cassette weight	0,5 kg	0,5 kg	2,5 kg	approx. 1,5 – 2,5 kg	approx. 2 – 3 kg	approx. 2 – 5 kg
Electrical data	230 V~, AC 50 Hz 10 A	230 V~, AC 50 Hz 10 A	230 V~, AC 50 Hz 10 A	230 V~, AC 50/60 Hz	230 V~, AC 50/60 Hz	400 V~, AC 50/60 Hz
Maximum power consumption	0,7 kW	0,75 kW	1 kW	1,6 kW	2,5 kW	8,8 kW
Lengths of cable/ connection plug	2,5 m / 1-phase grounded	2,5 m / 1-phase grounded	2 – 3 m / 1-phase grounded	2 m / 1-phase grounded	1,5 m / 1-phase grounded	- / 3-phase
Press power	930 N	1003 N	1003 N	1400 N	1400 N	7000 N
Capacity	up to 8 cycles/min	up to 10 cycles/min	up to 10 cycles/min	2 – 4 cycles/min	2 with MAP, 2 – 6 without MAP	3 with MAP, 2 – 6 without MAP
Start-up heating time	15 min	15 min	20 min	10 min	10 min	20 min
Dimensions	DF10	DF20	DF25	DF32	DF36	DF44
Length	640 mm (with handle) 540 mm (base)	615 mm	760 mm	470 mm	680 mm	1030 mm
Width	240 mm	220 mm	355 mm	465 mm	550 mm	685 mm
Height	260 mm (closed) 500 mm (open)	220 mm (closed) 520 mm (open)	350 mm (closed) 650 mm (open)	410 mm	710 mm	1570 mm
Trays/Film/Sealing	DF10	DF20	DF25	DF32	DF36	DF44
Maximum sealable tray dimension (length x width x depth)	265x175x100 mm (>¼ GN)	265x175x70 mm (>¼ GN)	325x265x100 mm (¼ GN)	380x280x100 mm (>¼ GN)	325x265x100 mm (¼ GN)	430x315x95 mm (150 mm deep optional)
Maximum film width	185 mm	185 mm	272 mm	380 mm	390 mm	470 mm
Sealing temperature	max 210°C	max 190°C	max 180°C	max 200°C	max 200°C	max 200°C
Sealing technique	Manual	Semi-automatic	Semi-automatic	Semi-automatic	Semi-automatic	Semi-automatic
Number of rolls	1	1	1	1	1	1
MAP - Modified Atmosphere Packaging	-	-	-	-	Yes	Yes
Vacuum chambers	-	-	-	-	1	1
Compressors	DF10	DF20	DF25	DF32	DF36	DF44
152558 Compressor 55E-24	-	-	-	-	-	Yes
152556 Compressor 3x55E-24	-	-	-	-	-	Yes



DF10



DF20



DF25



DF32



DF36



DF44



Entry Level

Our economical manual entry level model is the DF10; made completely out of stainless steel. It is ideal wherever counter space is limited (fits 60 cm) or sealing needs are less demanding. Nevertheless, it is designed and constructed in the DUNIFORM® fashion of solid Swedish heavy-duty workmanship.



DF10 DUNIFORM®

- Fits 60 cm standard kitchen counters
- Easy and precise sealing
- Light and compact which makes it ideal for smaller businesses
- Built of stainless steel
- Built ready for use with regular 230 V
- Easy to operate and clean



General Information	DF10
Article number	700080
Machine weight	13 kg
Cassette weight	0,5 kg
Electrical data	230 V~ AC 50 Hz 10 A
Maximum power consumption	0,7 kW
Lengths of cable / connection plug	2,5 m / 1-phase grounded
Press power	930 N
Capacity	up to 8 cycles/min
Start-up heating time	15 min

Dimensions	DF10
Length	640 mm (with handle) 540 mm (base)
Width	240 mm
Height	260 mm (closed) 500 mm (open)

Trays/Film/Sealing	DF10
Maximum sealable tray dimension (length x width x depth)	265 x 175 x 100 mm (>¼ GN)
Maximum film width	185 mm
Sealing temperature	Max 210°C
Sealing technique	Manual
Number of rolls	1
MAP - Modified Atmosphere Packaging	N/A
Vacuum chambers	N/A

Accessories for DF10

Article	Description	Benefits	Size (mm) LxWxH	Qty/ Cart.
various	Extra Cassettes DF10	-	271,5x193x16	1
155198	Spike Roll DF10	Venting	221x95x66	1
	The Spike Roll is basically a roll with integrated sharp pins that perforate the sealing film before the tray is sealed. This device is very useful when there is a need for "breathable" packing. The sealed remains leakproof and only lets the steam come out.			
887120	Trolley Stand	-	600x400x800	1





Medium to high volume

The true workhorses for small and medium sized businesses are the semi-automatic DF20, DF25 and DF32 (the DF25 and DF32 can seal ½ GN size trays). These machines are unmatched in operational performance in their size and price class. Being semi-automatic translates into efficient handling and maximum benefit.



DF20 DUNIFORM®

NEW

- Can be used on standard kitchen counter
- Semi-automatic for precise continuous sealing
- Light and compact
- Changeover of tray configurations in seconds
- Built of stainless steel for professional use
- Digitalized settings for easy operation
- Built ready for use with regular 230 V
- Easy to operate and clean



General Information	DF20
Article number	700095
Machine weight	20 kg
Cassette weight	0,5 kg
Electrical data	230 V~ AC 50 Hz 10 A
Maximum power consumption	0,75 kW
Lengths of cable / connection plug	2,5 m / 1 phase grounded
Press power	1003 N
Capacity	up to 10 cycles/min
Start-up heating time	15 min
Dimensions	DF20
Length	615 mm
Width	220 mm
Height	220 mm (closed) 520 mm (open)
Trays/Film/Sealing	DF20
Maximum sealable tray dimension (length x width x depth)	265 x 175 x 70 mm (>¼ GN)
Maximum film width	185 mm
Sealing temperature	100°C – 190°C
Sealing technique	Semi-automatic
Number of rolls	1
MAP - Modified Atmosphere Packaging	N/A
Vacuum chambers	N/A

Accessories for DF20



Article	Description	Benefits	Size (mm) LxWxH	Qty/ Cart.
various	Extra Cassettes DF20	-	271,5x193x16	1
102014	Cassette Rack for under DF20	Holds 2 cassettes	555x220x67	1
102903	Spike Roll DF20	Venting	221x95x66	1
	The Spike Roll is a roll with integrated sharp pins that perforate the sealing film before the tray is sealed. This device is useful when there is a need for "breathable" packing. The sealed tray remains basically leakproof and only lets the steam come out.			
887120	Trolley Stand	-	600x400x800	1



DF25 DUNIFORM®

- Seals sizes up to ½ GN (catering)
- Semi-automatic for precise continuous sealing
- Changeover of tray configurations in seconds
- Built of stainless steel for professional use
- Built ready for use with regular 230 V
- Easy to operate and clean



General Information	DF25
Article number	700090
Machine weight	43 kg
Cassette weight	2,5 kg
Electrical data	230 V~ AC 50 Hz 10 A
Maximum power consumption	1 kW
Lengths of cable / connection plug	2 – 3 m / 1 phase grounded
Press power	1003 N
Capacity	up to 10 cycles/min
Start-up heating time	20 min
Dimensions	DF25
Length	760 mm
Width	355 mm
Height	350 mm (closed) 650 mm (open)
Trays/Film/Sealing	DF25
Maximum sealable tray dimension (length x width x depth)	325 x 265 x 100 mm (½ GN)
Maximum film width	272 mm
Sealing temperature	100°C – 180°C
Sealing technique	Semi-automatic
Number of rolls	1
MAP - Modified Atmosphere Packaging	N/A
Vacuum chambers	N/A



141549 Adapter for DF10/20 cassettes



Accessories for DF25				
Article	Description	Benefits	Size (mm) LxWxH	Qty/ Cart.
various	Extra Cassettes DF25	from ½ to ¾ GN	378x290x22	1
141549	Adapter for DF20/10 Cassettes		379x290x22	1
108824	Spike Roll DF25	Venting	320x100x68	1
		The Spike Roll is a roll with integrated sharp pins that perforate the sealing film before the tray is sealed. This device is useful when there is a need for "breathable" packing. The sealed tray remains basically leakproof and only lets the steam come out.		
887100	Trolley Stand	-	900x650x670	1
103724	Trolley Stand	-	1200x650x670	1



DF32 DUNIFORM®

NEW

- Semi-automatic for easy operation
- Change cassette and tray shape in no time
- Ideal for small to medium sized businesses in the food industry
- Small foot print (470 x 340 mm) makes it easy to place
- Seals trays up to 380 x 280 x 100 mm (½ GN, 325 x 265 mm)
- Can seal all trays in the DUNIFORM® Sealing Concept
- Runs without compressor and on normal 1-phase power supply
- Made of stainless steel
- **New in 2010:** figure cutting as an option (159788)



General Information	DF32
Article number	160900
Machine weight	approx. 50 kg
Cassette weight	1,5 – 2,5 kg
Electrical data	1/N/PE 230 V~ AC 50/60 Hz
Maximum power consumption	1,6 kW
Lengths of cable / connection plug	2 m
Press power	1400 N
Capacity	2 – 4 cycles/min
Start-up heating time	10 min

Dimensions	DF32
Length	470 mm
Width	465 mm
Height	410 mm

Trays/Film/Sealing	DF32
Maximum sealable tray dimension (length x width x depth)	380 x 280 x 100 mm
Maximum film width	380 mm
Sealing temperature	max 200°C
Sealing technique	Semi-automatic
Number of rolls	1
MAP - Modified Atmosphere Packaging	N/A
Vacuum chambers	N/A

Accessories for DF32

Article	Description	Benefits	Size (mm) LxWxH	Qty/ Cart.
various	Extra Cassettes DF32	-	-	1
	Spike Roll DF32	Venting	482x96x62	1
	The Spike Roll is a roll with integrated sharp pins that perforate the sealing film before the tray is sealed. This device is very useful when there is a need for "breathable" packing.			
887100	Trolley Stand	-	900x650x670	1
887120	Trolley Stand	-	600x400x800	1



High volume

If your needs are even higher or your business requires figure cutting of the sealing film, we recommend DF36 or DF44. The major difference is that DF36 and DF44 is also able to apply modified atmosphere (MAP) while packaging. MAP has a significant impact on your customer radius and kitchen utilization (see MAP section page 84 – 85). Also, both machines utilize a different operational concept to even further increase your benefits. Many of our customers switch from manual or semiautomated machines to machines with figure cutting and MAP possibilities when their business volume or their customer radius expands.



DF36 DUNIFORM®

NEW

- Semi-automatic for easy operation
- Easy to change tool, cassette and tray shape
- Ideal for the professional kitchen, smaller food processors, supermarkets with in-house production etc.
- A footprint of just 480 x 480 mm and fits nearly anywhere
- 9 programmable cycles for packaging of different products, including soft vacuum function for vacuum sensitive foods e.g. mashed potatoes and whipped cream
- Low gas consumption when using MAP and low energy consumption
- External vacuum pump included (20 m³/h)
- High oxygene vacuum pump as option
- Runs without compressor and on normal 1-phase power supply
- Delivered with figure cutting
- Made of stainless steel
- Can seal all trays in the DUNIFORM® range



General Information	DF36
Article number	191000
Machine weight	approx. 85 kg
Cassette weight	2 – 3 kg
Electrical data	1/N/PE AC 230 V~ – 50/60 Hz
Maximum power consumption	2,5 kW
Lengths of cable / connection plug	1,5 m
Press power	1400 N
Capacity	2 with MAP, 2 – 6 without MAP
Start-up heating time	10 min

Dimensions	DF36
Length	680 mm
Width	550 mm
Height	710 mm

Trays/Film/Sealing	DF36
Maximum sealable tray dimension (length x width x depth)	325 x 265 x 100 mm
Maximum film width	390 mm
Sealing temperature	max 200°C
Sealing technique	Semi-automatic
Number of rolls	1
MAP - Modified Atmosphere Packaging	Yes
Vacuum chambers	1

Accessories for DF36

Article	Description	Benefits	Size (mm) LxWxH	Qty/ Cart.
various	Extra Cassettes DF36	-	-	1
	Spike Roll DF36	Venting	-	1
	The Spike Roll is a roll with integrated sharp pins that perforate the sealing film before the tray is sealed. This device is very useful when there is a need for "breathable" packing.			
887100	Trolley Stand	-	900x650x670	1
887120	Trolley Stand	-	600x400x800	1





DF44 DUNIFORM®

NEW

- Semi-automatic; intended for large-scale kitchen and smaller food processors
- Can seal all trays in the DUNIFORM® range
- Delivered with figure cutting/ profile cutting
- The excess film material is automatically wound up
- 9 programmable cycles for packaging of different products, including soft vacuum function for vacuum-sensitive foods e.g. whipped cream
- Adjustable lower chamber enables lower gas consumption
- Standard operating settings leaves less than 0,5 % oxygen in the tray
- Suitable for modified atmosphere packaging and high oxygen
- Easy to change the mold for tray changeover
- Easy to use. No difficult adjustments
- Built-in vacuum pump (40 m³/h)
- Built-in silent air compressor as option



General Information	DF44
Article number	160901
Machine weight	approx. 190 kg
Cassette weight	2 – 5 kg
Electrical data	3/N/PE AC 400 V~ – 50/60 Hz
Maximum power consumption	8,8 kW
Lengths of cable / connection plug	- / 3-phase
Press power	7000 N
Capacity	3 with MAP, 2 – 6 without MAP
Start-up heating time	20 min
Dimensions	DF44
Length	1030 mm
Width	685 mm
Height	1570 mm
Trays/Film/Sealing	DF44
Maximum sealable tray dimension (length x width x depth)	430 x 315 x 95 mm (150 mm deep optional)
Maximum film width	470 mm
Sealing temperature	max 200°C
Sealing technique	Semi-automatic
Number of rolls	1
MAP - Modified Atmosphere Packaging	Yes
Vacuum chambers	1

Accessories for DF44

Article	Description
152558	External Compressor 55E-24
152556	External Compressor 3x55E-24

Modified Atmosphere Packaging

In order to prevent loss of natural freshness and quality, an effective and intelligent food preservation concept called Modified Atmosphere Packaging (MAP) has been developed. The use of natural gases together with proper packaging materials and machines help to maintain the quality of the food and prolong their shelf life. The MAP gas mixtures usually consist of the gases already present in the air that we breathe but in different mixtures: carbon dioxide (CO₂), nitrogen (N₂) and oxygen (O₂). The gas mixture is added before the trays are sealed.



MAP

"Discover the ultimate combination for freshness – MAPAX® prolongs shelf life the natural way," according to Linde Gas, the leading producer of gases in Europe.

The trend

Nowadays, customers are more aware of quality than ever before. Thus, the demand for good, high quality, minimally processed and attractively packaged food is rapidly increasing. As a result, food manufacturers and producers have to work hard to meet this demand. People want freshly produced convenience food, often as smart

ready-to-eat meals – as if they had been freshly prepared directly from the kitchen. Time is obviously an essential factor in the handling of the food, so this makes it increasingly difficult to live up to the high expectations of consumers.

Maintaining freshness

The race against time begins the moment fruit is picked, the corn is harvested or the fish is caught. From precisely that point on, natural deterioration and spoilage constitute a risk to the quality and shelf life of the food. Threats to product freshness, such as hygienic conditions while processing and temperature

issues are things that must be taken into account. That is why the food packaging process as well as the package itself is crucial to freshness and quality.

Long-term profits

By packaging food in a modified atmosphere, it is possible to maintain high quality and extend shelf life by days or even weeks. Products that could not previously be distributed or stored fresh throughout the distribution chain can now be put on the shelves at retail outlets without sacrificing quality.

Benefits of MAP

Reduced spoilage

MAP makes it possible for products to maintain a safe level of quality and results in less spoilage and fewer returns due to longer shelf life. The cost of the gas is just a small part of the overall cost but it provides huge leverage.

Cost relations – Rules of thumb

Gas	Machine	Package	Food			
1	:	5	:	10	:	100



Low temperature is a highly effective inhibitor

Temperature is one of the most important factors controlling microbiological activity. Most microorganisms multiply optimally within the range of 20 °C to 30 °C and show a reduced growth pattern at lower temperatures. Careful temperature monitoring is therefore vital during all food handling and distribution stages. Chilling alone, however, will not solve all microbiological problems. But, when combined with MAP, they can be kept to a minimum.

Deterioration processes

Food is a biological, sensitive substance. Original freshness and shelf life are affected by the inherent properties of the product just as much as by external factors.

Internal factors affecting quality:

- the type and quantity of microorganisms
- water activity
- pH-value
- cell respiration
- food composition

External factors affecting quality:

- temperature
- hygienic conditions
- gas atmosphere
- processing methods

Preservation

The chart below depicts the increase in shelf life duration of different foods when using MAP technique. The ranges expressed here are under ideal conditions and may vary.

From food preservation to the protection of natural quality, present developments are moving away from preservative methods that physically or chemically alter the product. MAP is a natural shelf life-enhancing method that is growing rapidly on an international scale. It often complements other methods. Nevertheless, when selecting the correct gas atmosphere it is necessary to take the foodstuff and its specific properties into account.

The shelf life stated in the chart is under ideal conditions and may vary depending on a range of factors that are not taken into consideration. This table shows shelf life for products packaged in air vs. those packed using MAPAX®.

Food	Typical shelf life in air	Typical shelf life with MAPAX®
Raw red meat	2 – 4 days	5 – 8 days
Raw light poultry	4 – 7 days	16 – 21 days
Raw dark poultry	3 – 5 days	7 – 14 days
Sausages	2 – 4 days	2 – 5 weeks
Sliced cooked meat	2 – 4 days	2 – 5 weeks
Raw fish	2 – 3 days	5 – 9 days
Cooked fish	2 – 4 days	3 – 4 weeks
Hard cheese	2 – 3 weeks	4 – 10 weeks
Soft cheese	4 – 14 days	1 – 3 weeks
Cakes	several weeks	up to one year
Bread	several days	2 weeks
Pre-baked bread	5 days	20 days
Fresh cut salad mix	2 – 5 days	5 – 10 days
Fresh pasta	1 – 2 weeks	3 – 4 weeks
Pizza	7 – 10 days	2 – 4 weeks
Pies	3 – 5 days	2 – 3 weeks
Sandwiches	2 – 3 days	7 – 10 days
Ready meals	2 – 5 days	7 – 20 days
Dried foods	4 – 8 months	1 – 2 years





Thermo Bag and Boxes

The innovative thermo bag can be loaded from the side or from the top. Two or more thermo bags can be carried single handedly by connecting them with the integrated buckles. For small, large or lengthy food transports, we have an extensive DUNIFORM® range of sturdy thermo bags and boxes. We also have a whole array of functional accessories at your disposal, which includes environment-controlling tools, such as heating/cooling plates and temperature measuring devices. Let DUNIFORM® help you find a solution for transporting food.



Thermo Bag

- Load from the side or from the top
- 2 or more can be connected on top of each other with buckles
- Maintains food temperature
- Heavy duty and hard wearing



Article	Description	Comp	Benefits	Size (mm) LxWxH	Qty/ Cart.
157355	Thermo Bag	1	5 ¼ GN Tray	275x200x240	5
157401	NEW Thermo Bag	1	2 ¼ GN Tray	290x200x130	5
157403	NEW Thermo Bag	1	Large	420x200x260	5
157404	NEW Thermo Bag	1	HMR	310x240x260	5

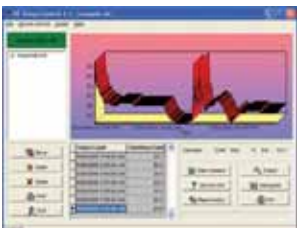
Temperature Control Equipment

Please contact us for order details

Article	Description	Size (mm) LxWxH	Qty/ Cart.
149403	Cooling Plate ¼ GN	164x265x15,5	5
153490	Heating Plate ¼ GN	164x265x15,5	5
154767	Cooling Plate ¼ GN Coaster included	530x325x15,5	1
157530	Small Heating Plate	155x155x15,5	5
155817	Stand for Heating Plate		1
115396	Temperature Button		1
	The Temperature Button is the tool that gathers temperature data when placed in the food or storage room. It can store up to 2048 measurements and take up to 1400 temperature measurements per day in temperatures from -20 to +85 °C. The measuring interval can be set from 1 minute to over 4 hours if necessary and the life expectancy of the button is approximately 1 million measurements.		
115399	Temperature Dataprogram		1
	By connecting the Button Holder to the Connection Device, the statistical data gathered can easily be downloaded onto a computer where the readings can be interpreted with various graphs and statistical tools included with the Connection Device.		
	System requirements:		
	<ul style="list-style-type: none"> • Windows 95 /98 / NT4.0 / 2000 / XP / Vista • 16 MB free internal memory (RAM) • VGA graphic 	<ul style="list-style-type: none"> • Intel Pentium 100 Mhz or higher • 10 MB free space on hard disk • 1 free serial port 9-pin (COM) or USB 	
115401	Temp. Button holder		1
	After the data has been gathered, the Button is placed in the Button Holder in order to connect it to the Connection Device.		



115399 115401 115396





Transport Box

- Allowed in the kitchen
- Approved for food contact
- Washable

NEW



Article	Description	Size (mm) LxWxH	Qty/ Cart.
159591 NEW	Transport Box for Trays	350x290x250	20
	The ideal carrying box for your sealed trays. It is lightweight, resistant to moisture and approved for direct food contact.		
	The box is made of a composition of chalk and PP plastic.		
159592 NEW	Lid for Transport Box	370x300x40	20

Thermo Box

- Ultimate heavy duty transport solution
- Stackable
- Maintains food temperature



Article	Description	Comp	Benefits	Size (mm) LxWxH	Qty/ Cart.
130190	Thermo Box - EPP	1	½ GN	650x405x335	1
108887	Thermo Box - EPP	1	½ GN	400x320x345	1
113500	Thermo Box - EPP	3	Single Portion	390x320x105	6
751500	Thermo Box - EPP	3	Single Portion	460x325x115	5
752103	Thermo Box - EPS	1	½ GN	730x435x350	1
751103*	Thermo Box - EPS	3	½ GN	685x365x320	1
753103	Thermo Box - EPS	2	2x750513	550x450x340	1

*While stocks last



A wide choice of materials

Duni products have a myriad of functions and uses. The symbols and definitions below will help you find the ideal products for your operation. Each year, more and more of our products are manufactured with the environment as first priority.

Symbol	Name	Best for	Temp. °C	RAW material	Recycled material	Biodegradable or Compostable
	C-PET	Oven application	-40°C to +220°C	Refined oil or natural gas	•	–
	PP	Microwave	-20°C to +125°C	Refined oil or natural gas	•	–
	PS-MW PS	Cold food, hot fill, Microwave	-4°C to +107°C	Refined oil or natural gas	•	–
	PLA	Cold food	-20°C to +40°C	Plant Starch	•	In industrial facilities
	APET	Cold food	-40°C to +70°C	Refined oil or natural gas	•	–
	rPET	Cold food, hot fill	-40°C to +70°C	50% recycled PET, 50% reformed oil or gas	Yes	–
	ALU	High heat oven use	-40°C to +250°C	Bauxite	•	–
	PAPER	Cold food, Microwave	-20°C to +125°C	Pulp/Trees	•	100% renewable material
	NatureFlex™	Cold food	-20°C to +80°C	Renewable resources	•	In industrial facilities



Meeting today's challenges with tomorrow's solutions.

All Duni ecoecho™ products that are made with an emphasis on sustainability, environmental friendliness and CO₂ footprint reduction have now been united under one concept: the Duni ecoecho™. Duni ecoecho™ products are those manufactured using either compostable (biodegradable) or recycled materials, and are therefore characterised by their superior environmental compatibility.



Symbols to guide you

These symbols will provide you with an instant idea as to the products' practical benefits and uses.



Uniquely designed for optimum stackability. Space-saving in the kitchen. Makes food preparation easier. Prepared meals can be stacked during transport.



Trays especially adapted for reheating, cooking or baking. PP trays max 125°C / CPET trays max 220°C. Max temp. may be lower depending on various factors.



No leaking or spilling. Ideal for transport. Featured in a selected range of Duni Boxes.



Product can be sealed in a DUNIFORM® machine.



Boxes and trays are microwave safe. Retain their shape perfectly after heating or reheating.



Film must be warmed or heated for easy peel, otherwise it can tear.



Ensures the lid or sealing film stays clear. Customers can see the food is fresh.



Film can be peeled off cold.



Hinged lid for convenient meal preparation. Easy storage. Easy to tear off and put back on.



An important part of Duni's environmental strategy is responsible forestry. In 2009, many of Duni's products were FSC (Forest Stewardship Council) Mixed Sources certified. The FSC assures that forests are managed in a way that meets the social, economic and ecological needs of present and future generations.



Find out more about how Duni can help you customize your own box on the Web.



This catalogue is printed on FSC-certified paper.

